

Ecosystem Services:
Ferman Lake Recreation Use

Overall
Response Rate (%)

>= 5%
2-5%
> 2%

Increased

Slightly Increased

Stayed the Same

Decreased

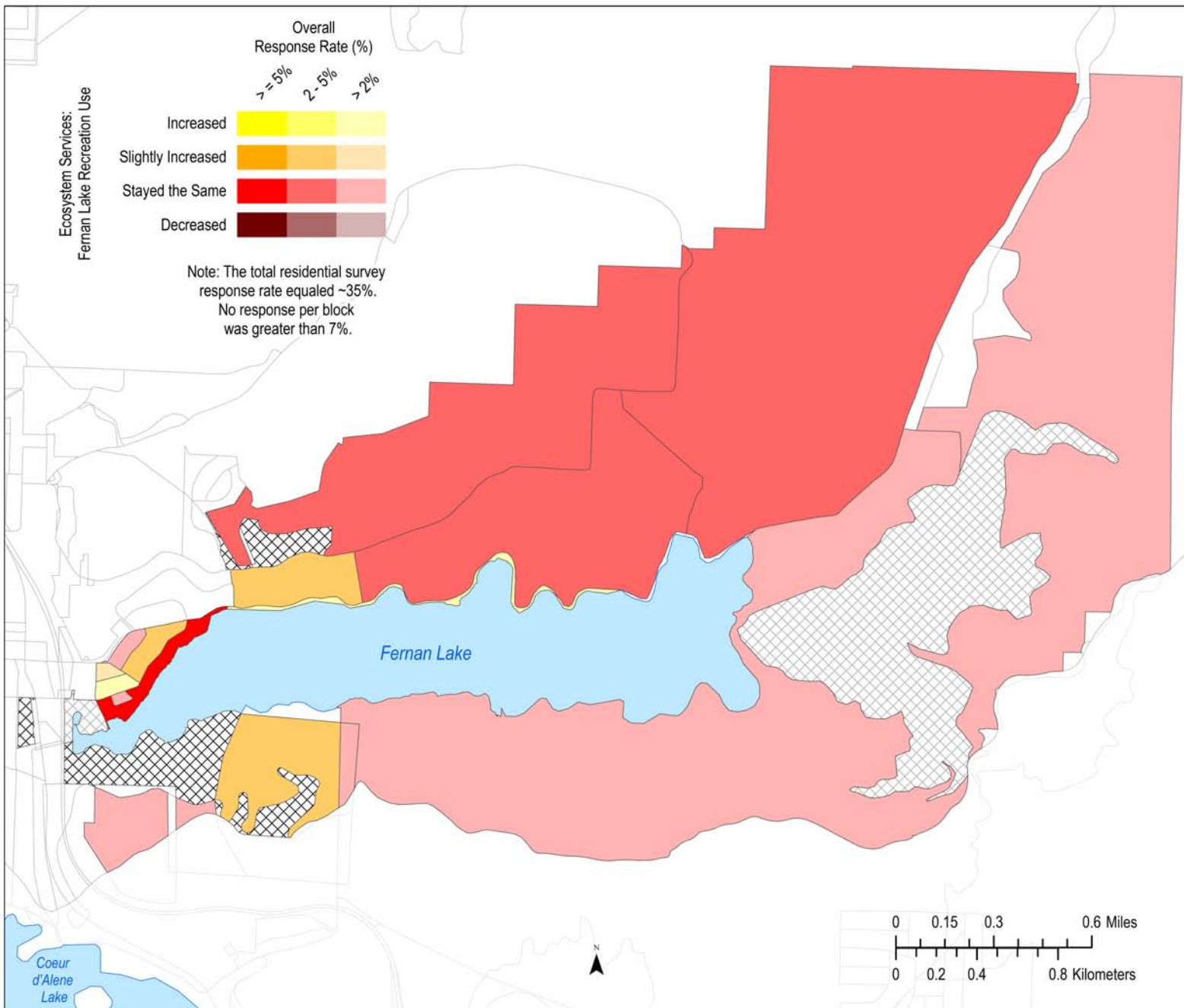
Note: The total residential survey
response rate equaled ~35%.
No response per block
was greater than 7%.

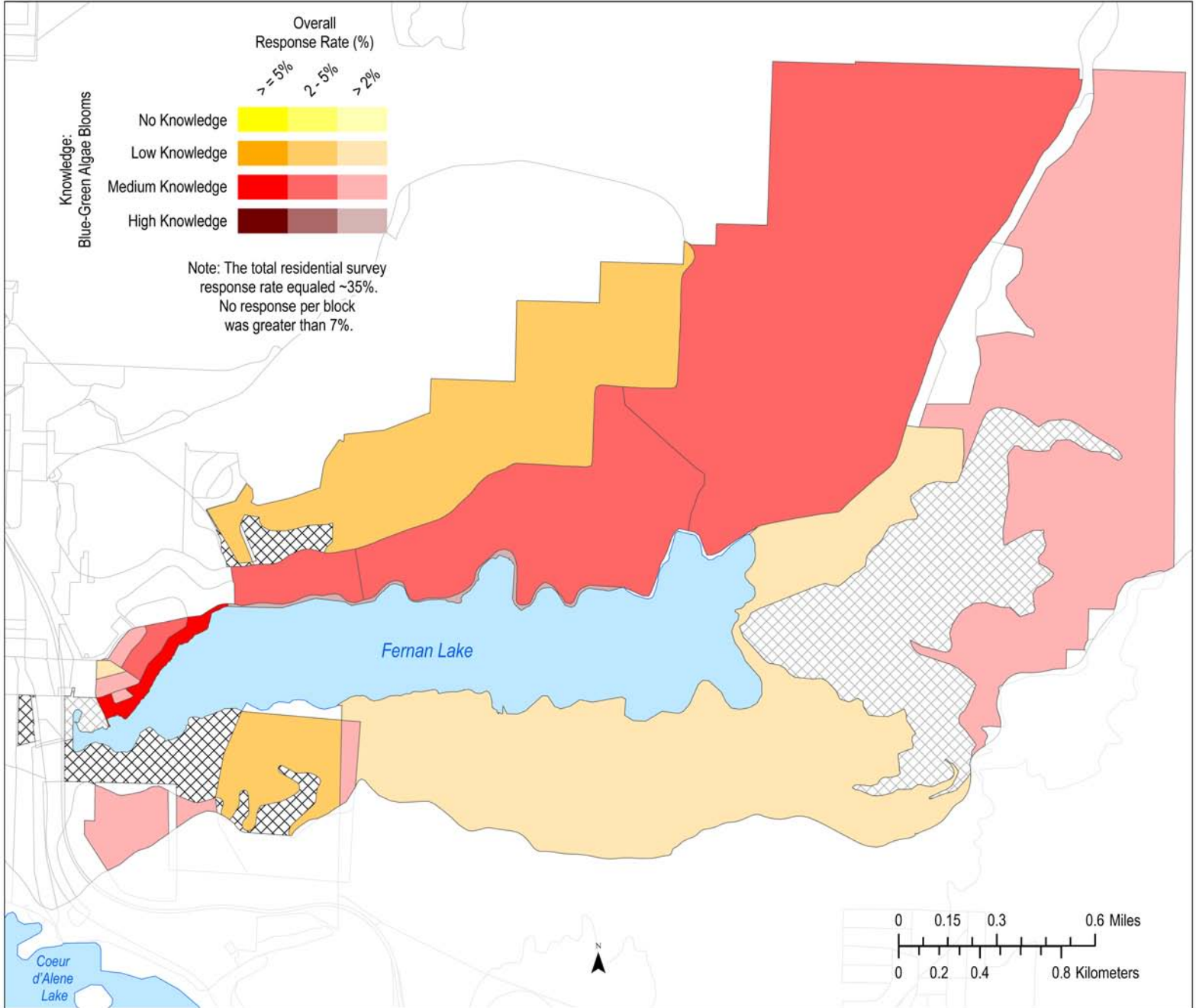
Ferman Lake

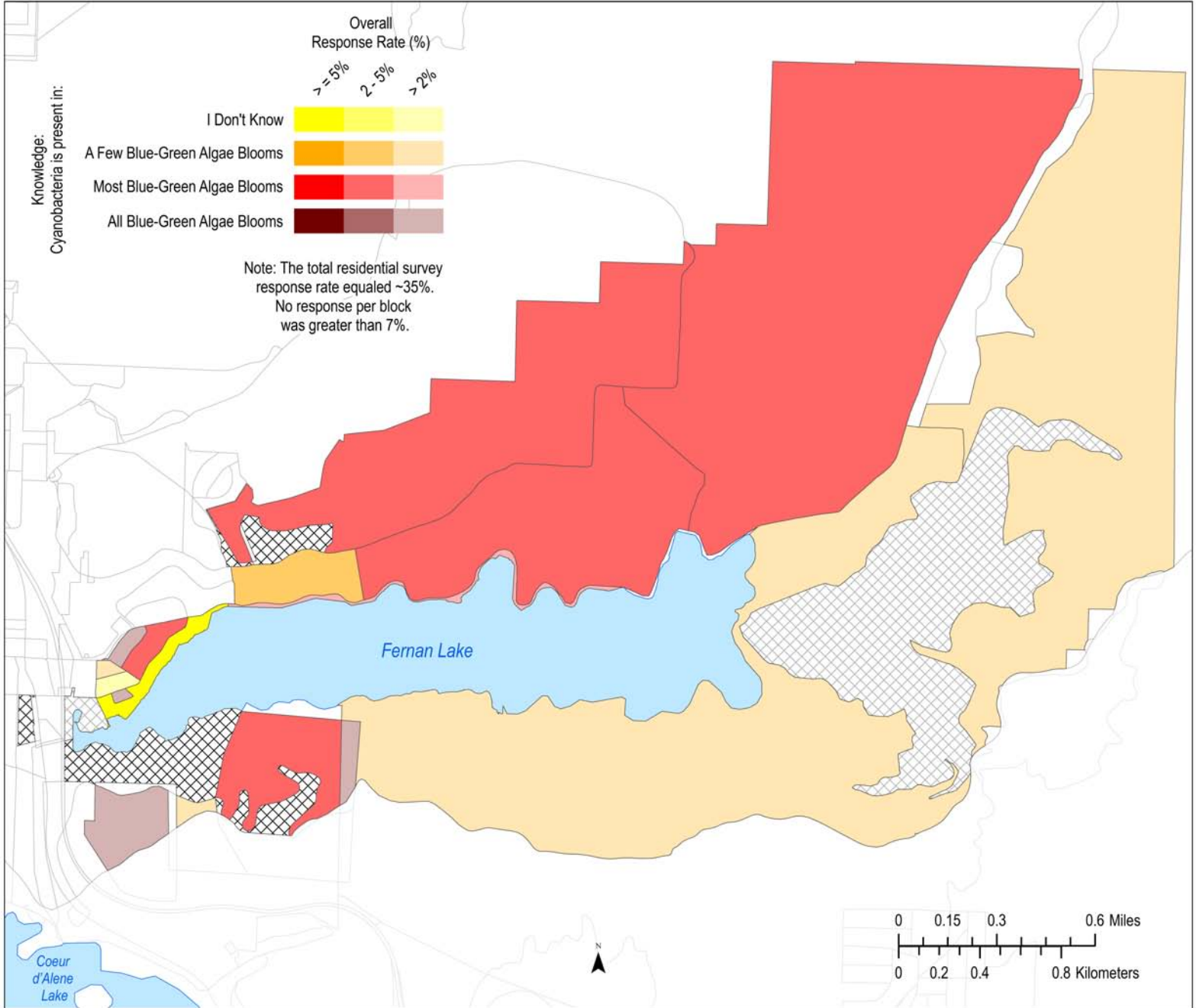
Coeur
d'Alene
Lake

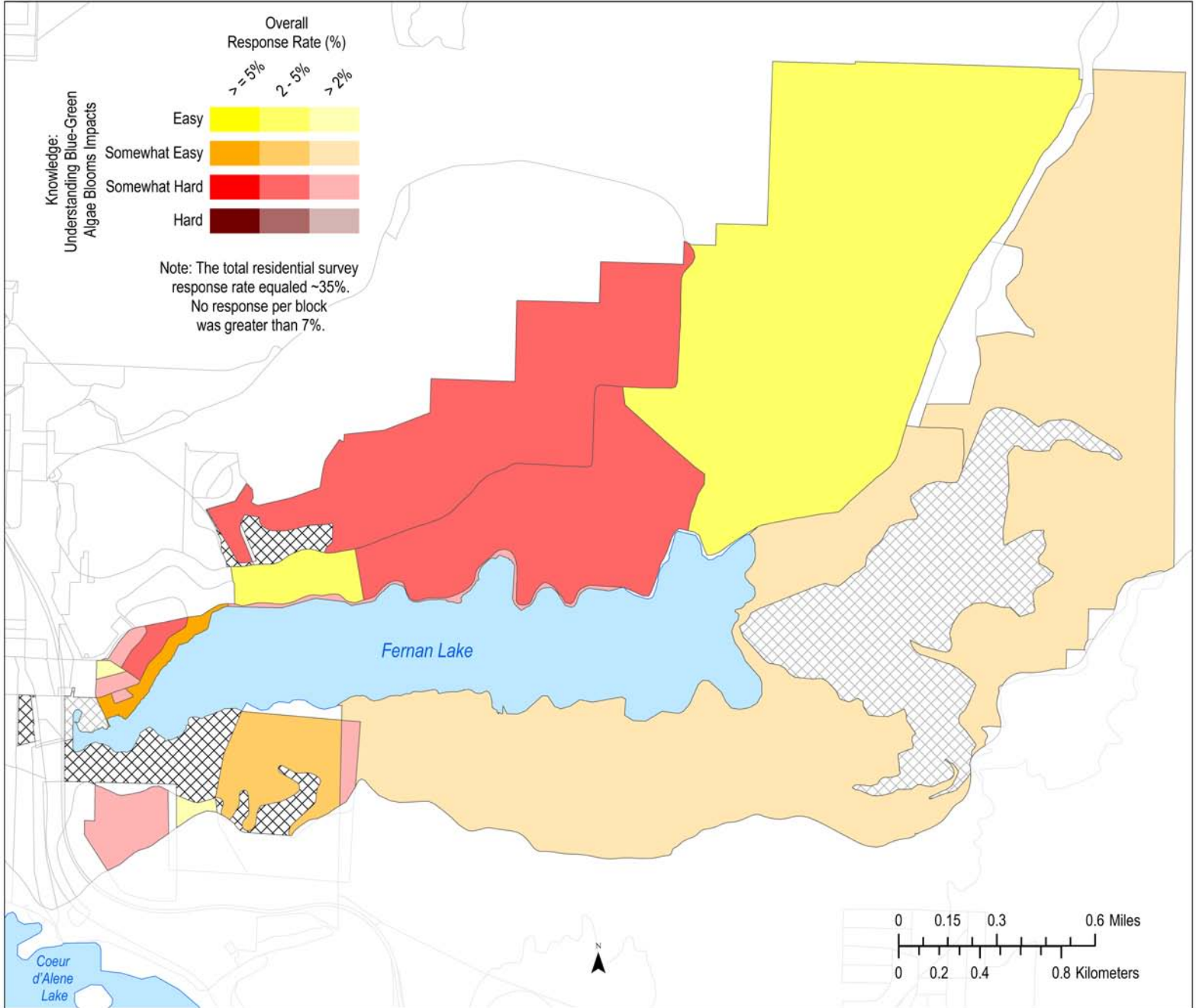


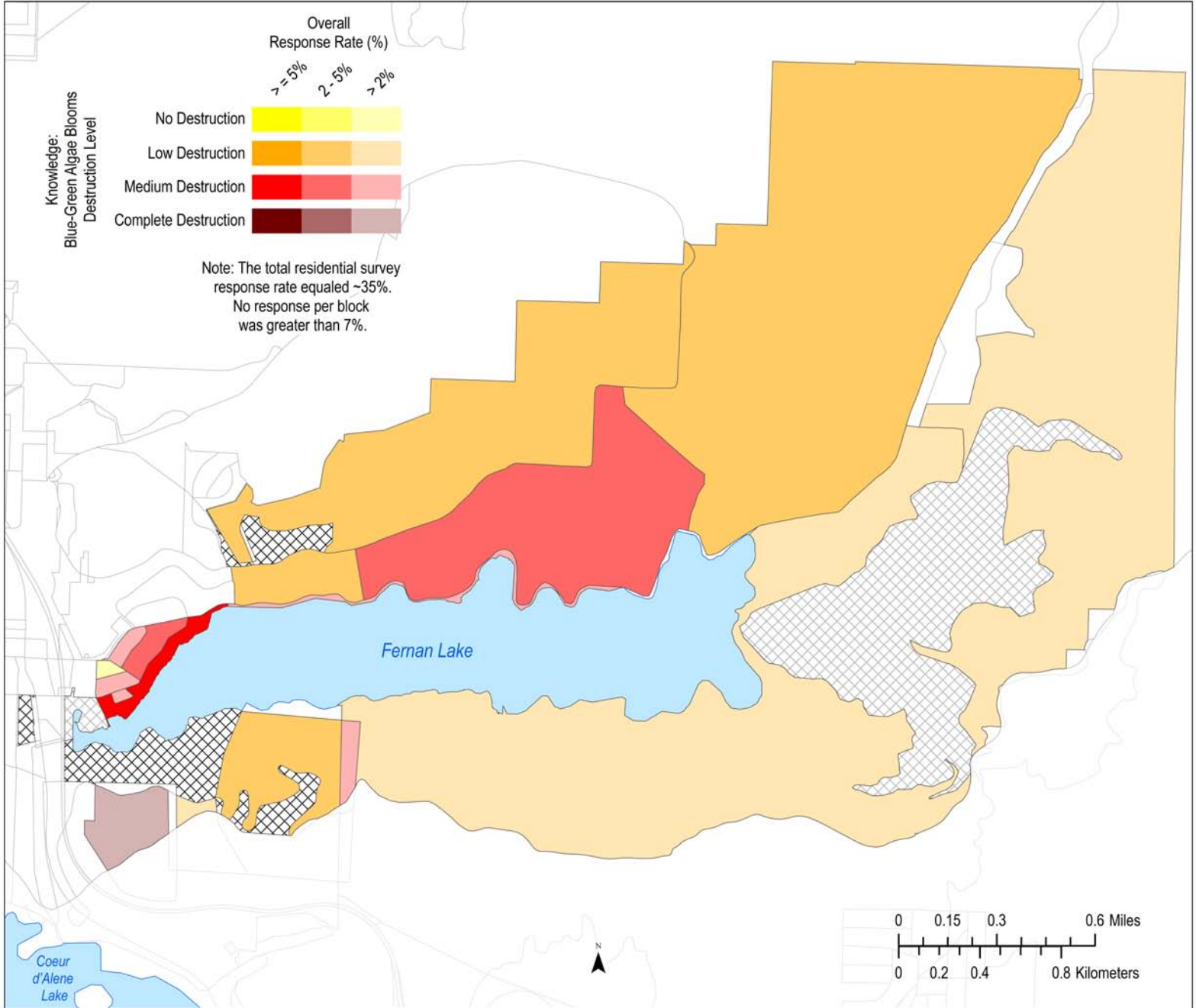
0 0.15 0.3 0.6 Miles
0 0.2 0.4 0.8 Kilometers

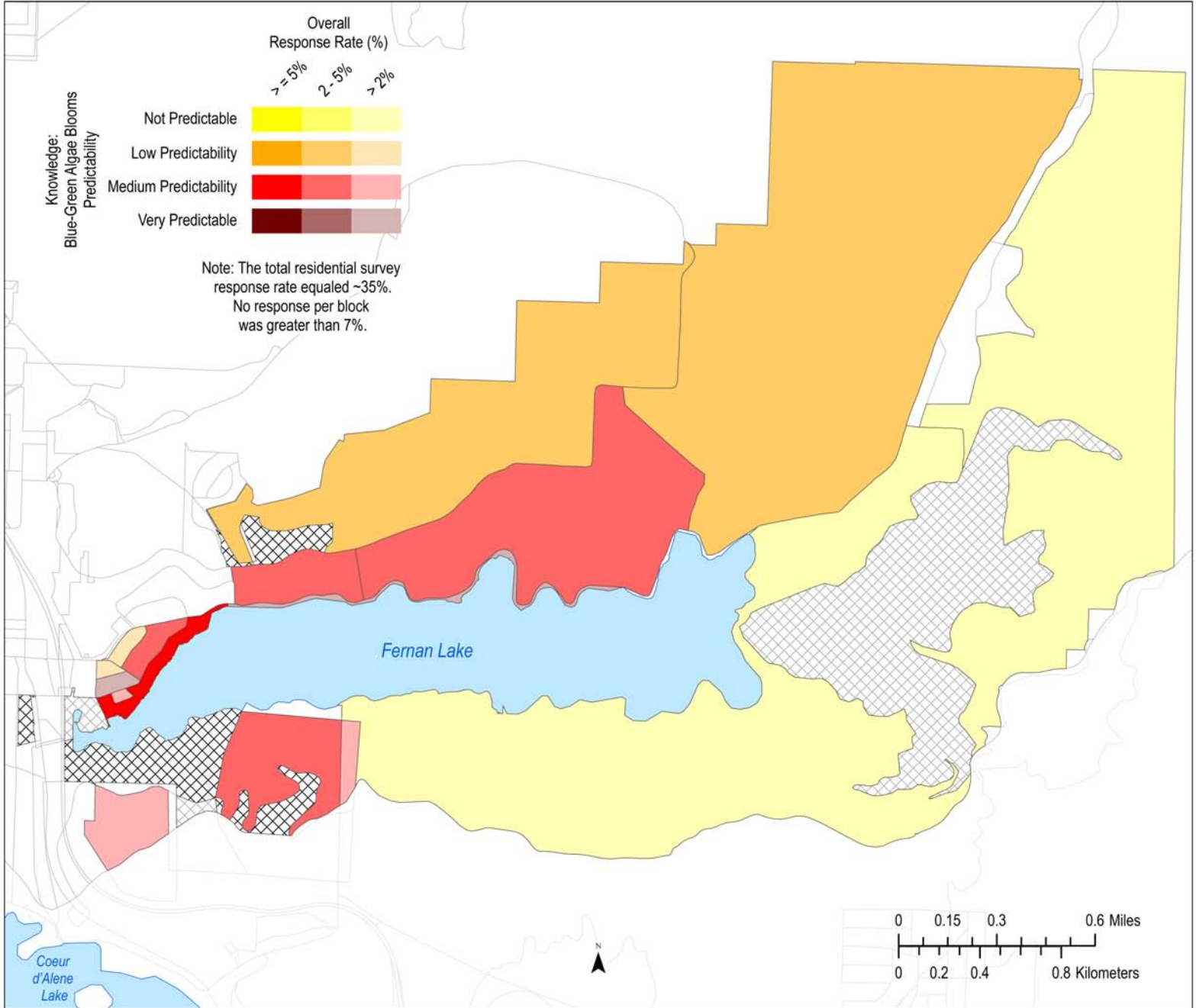


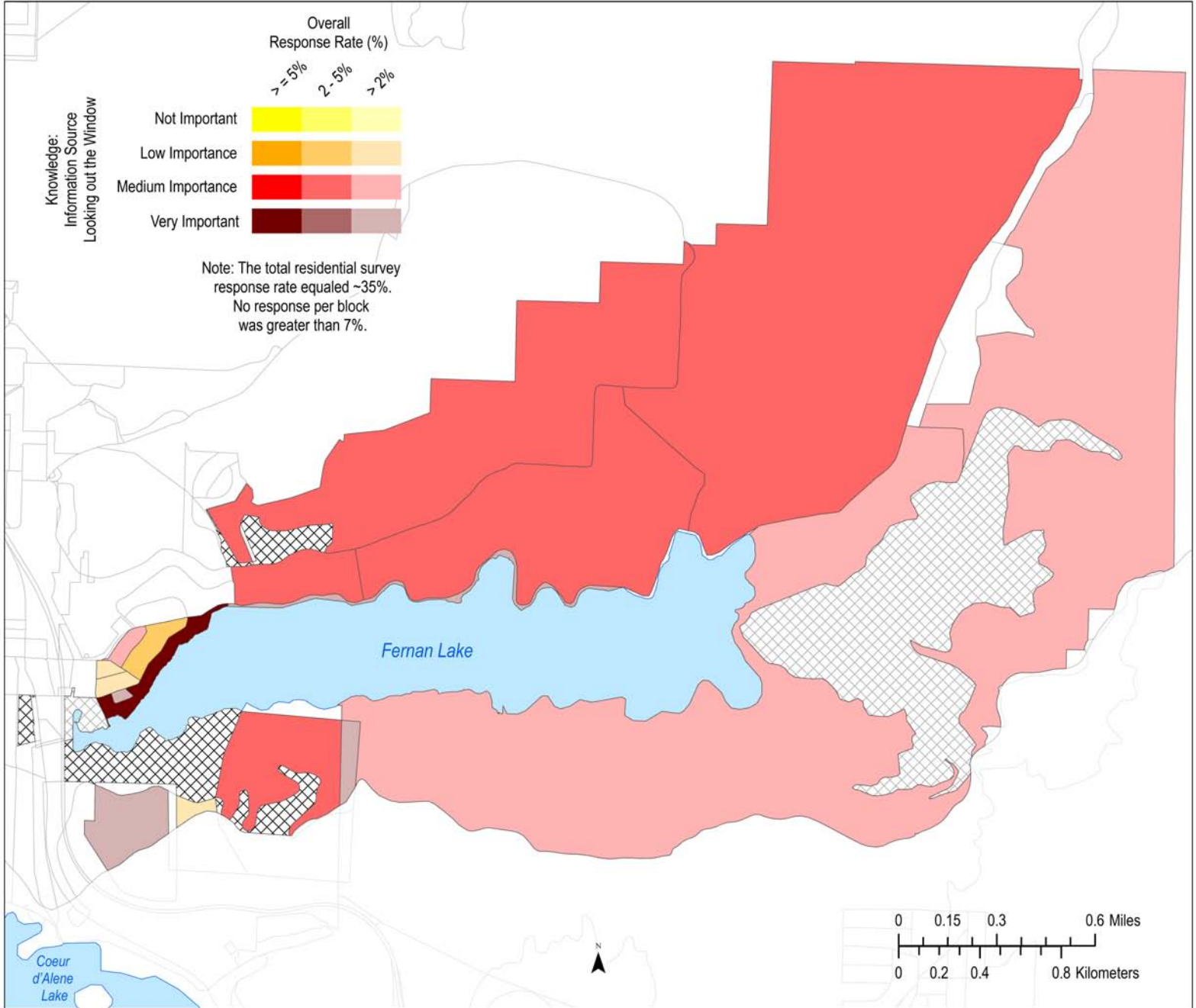


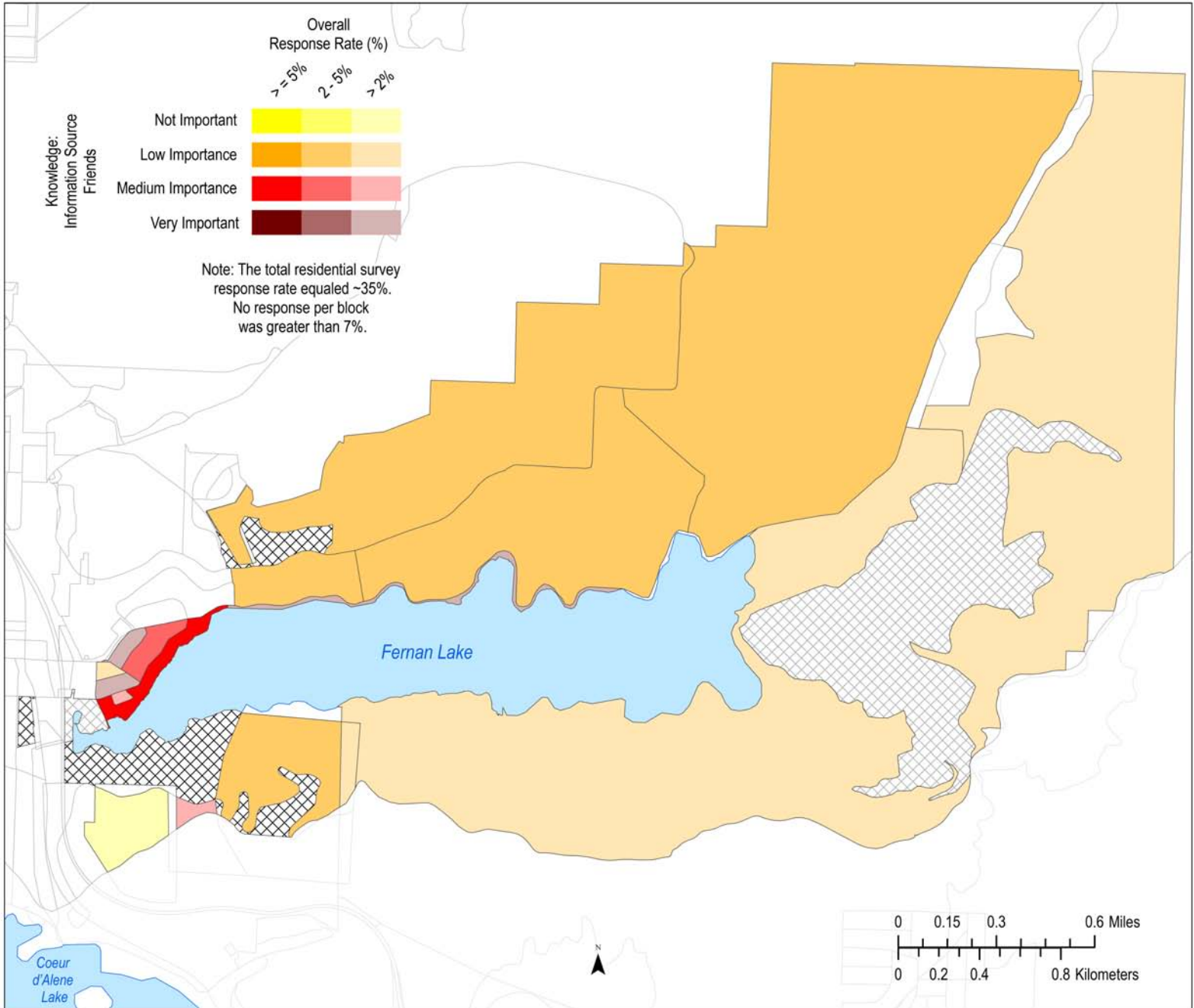


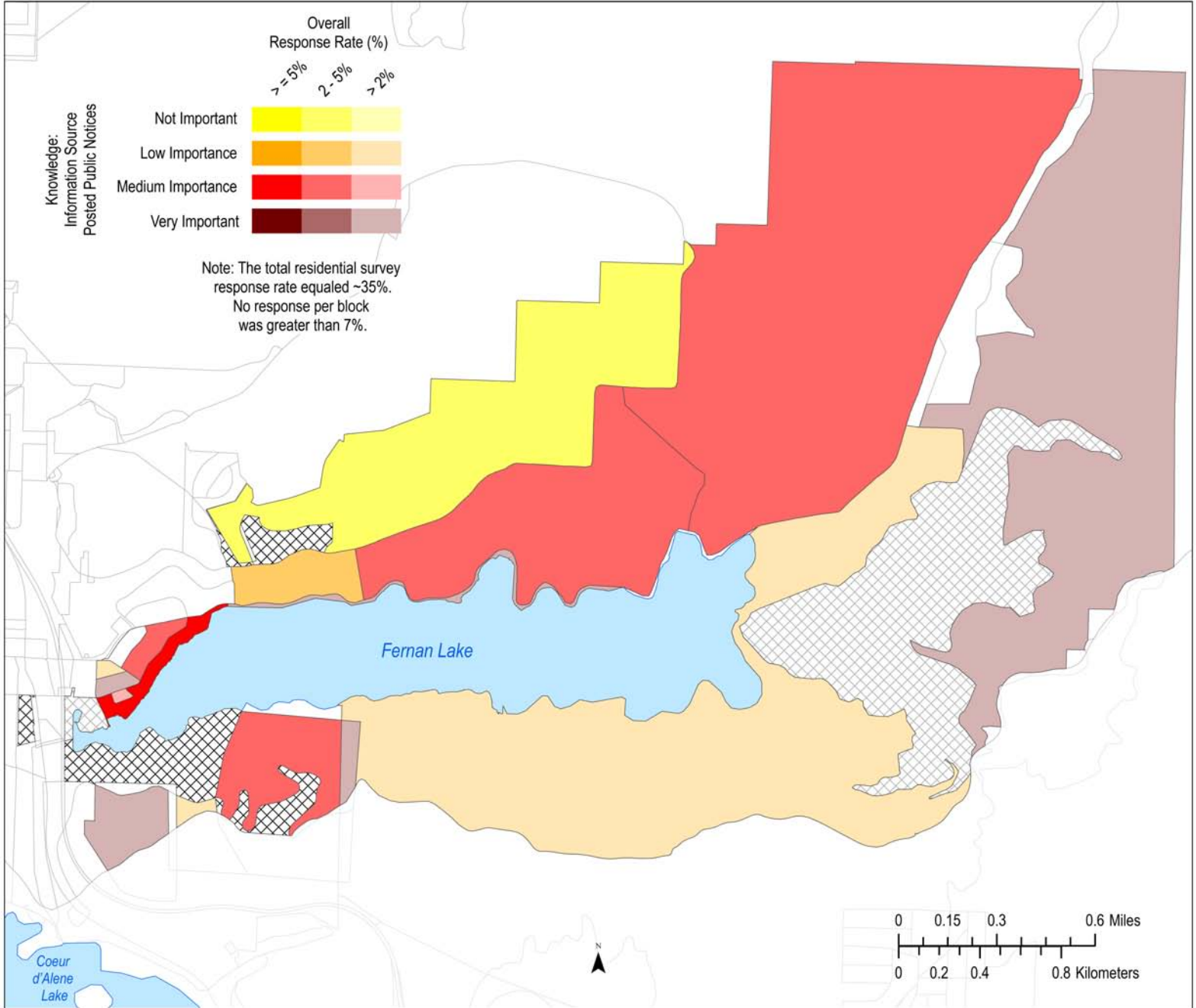


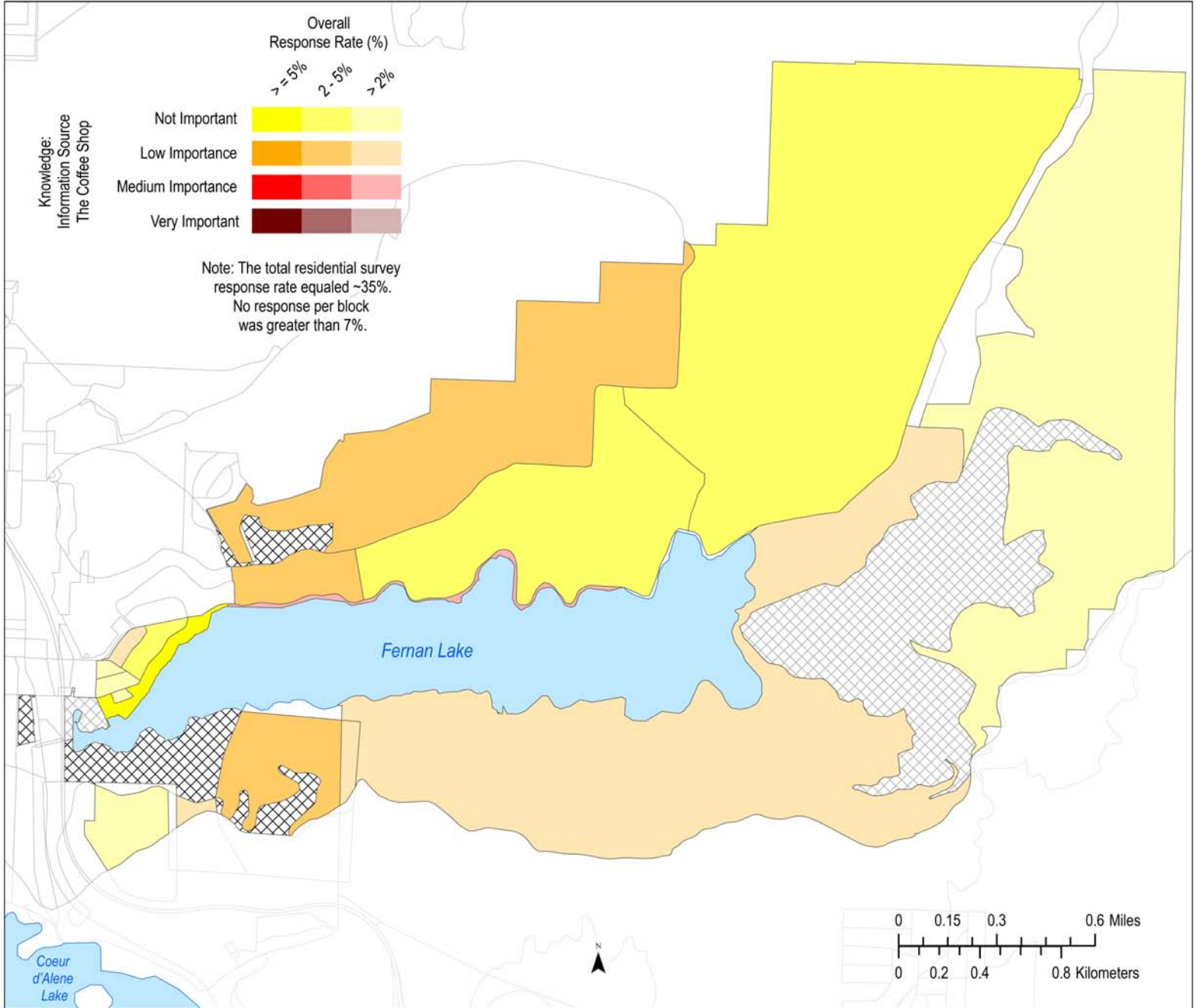


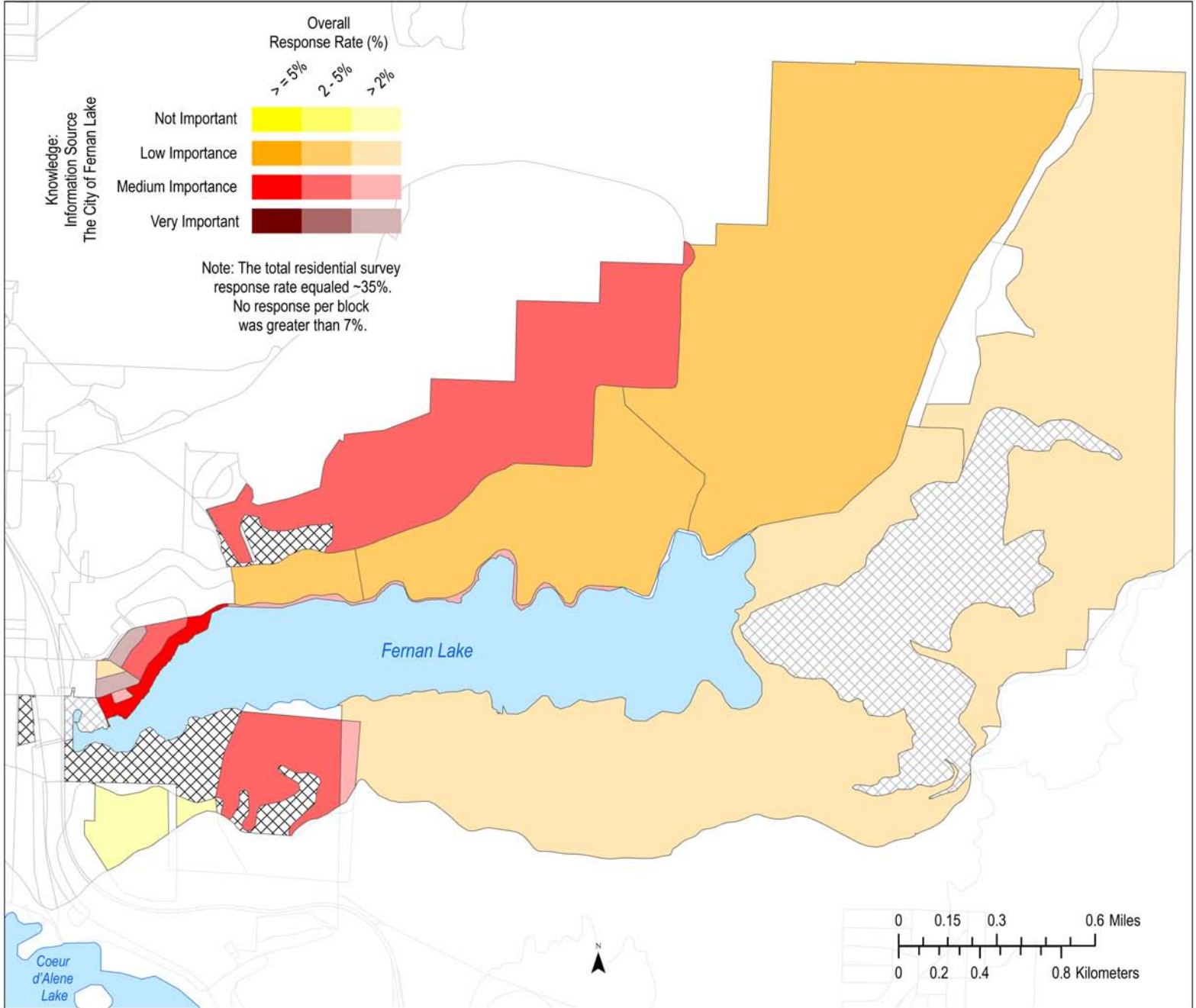


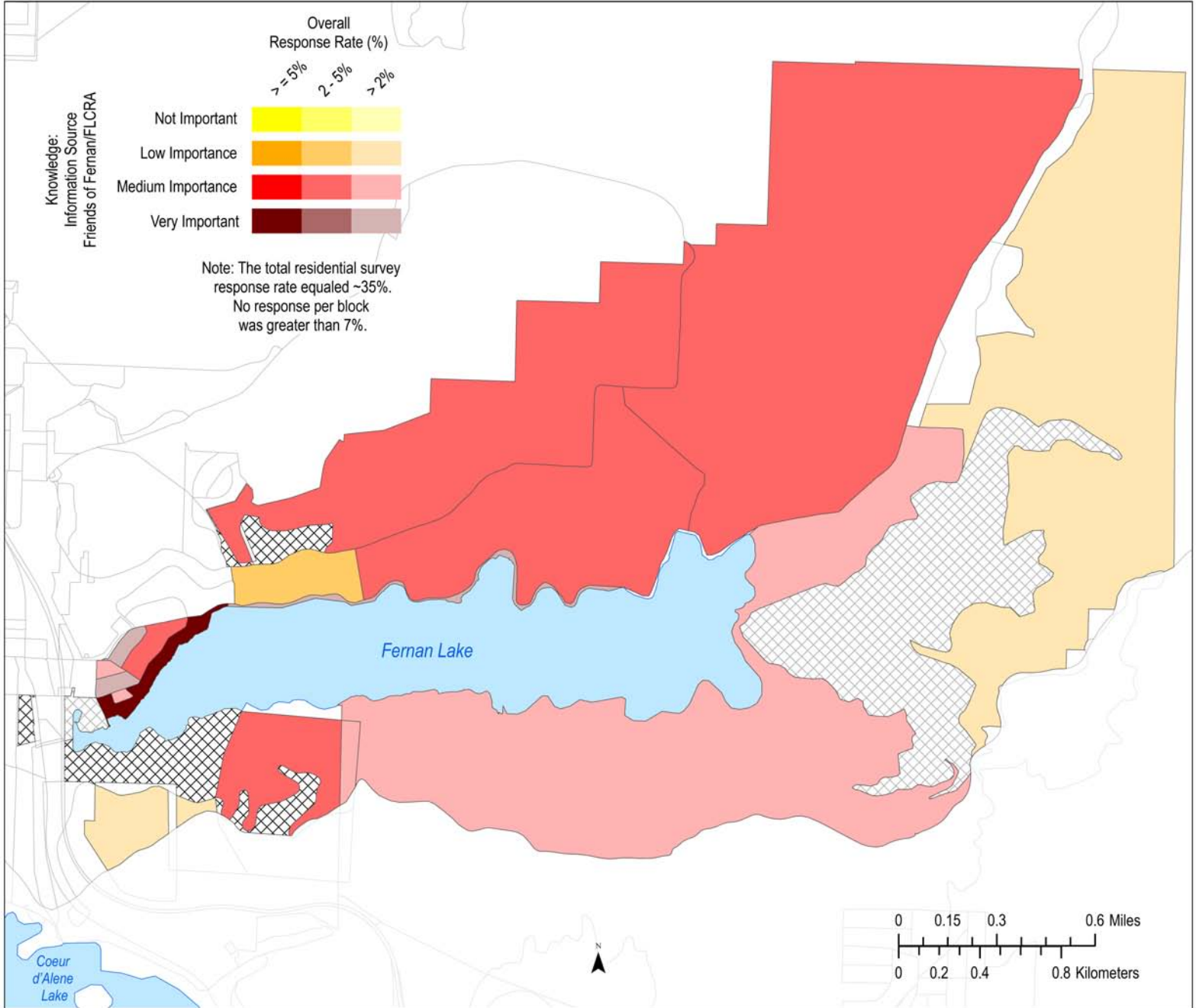


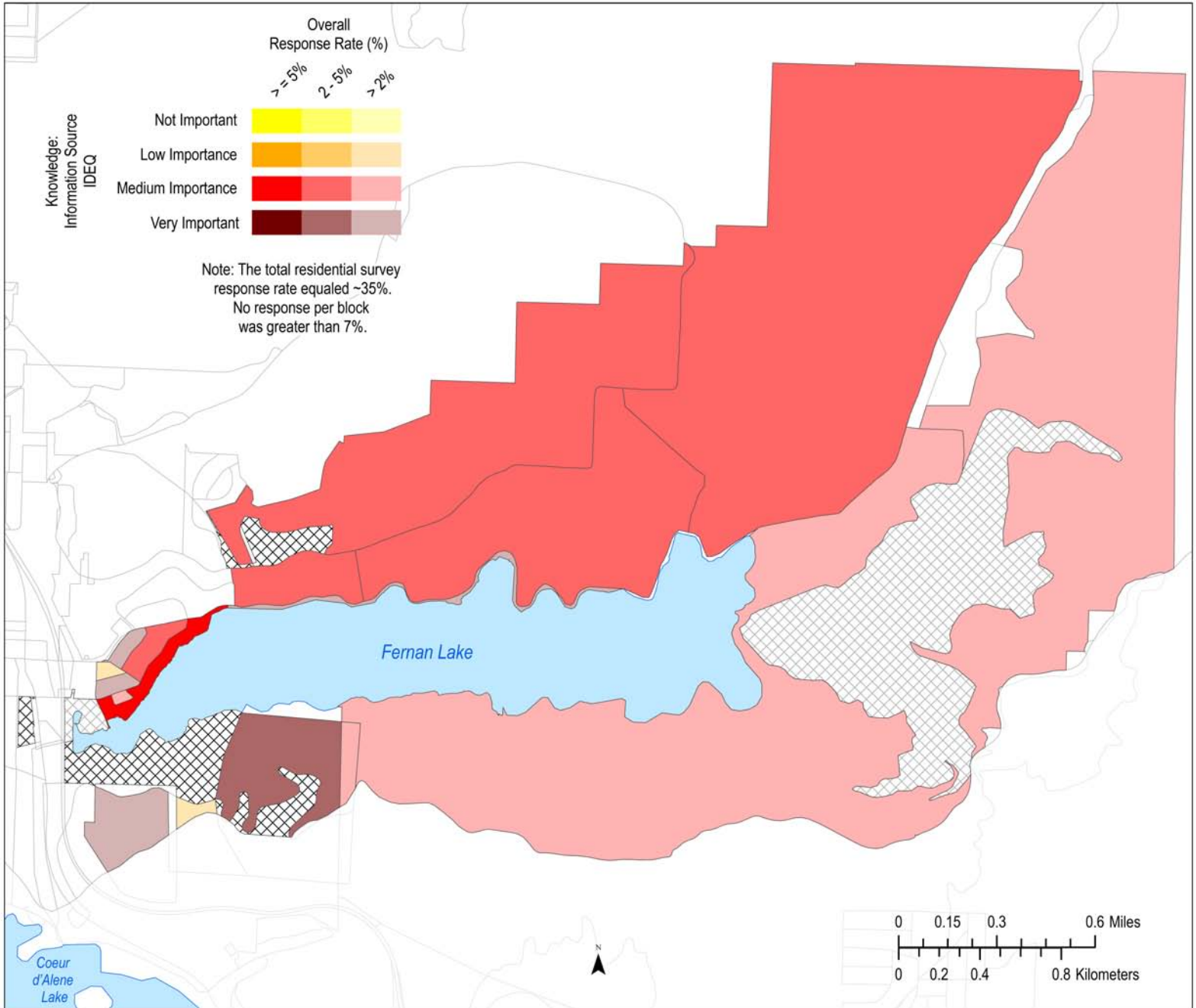


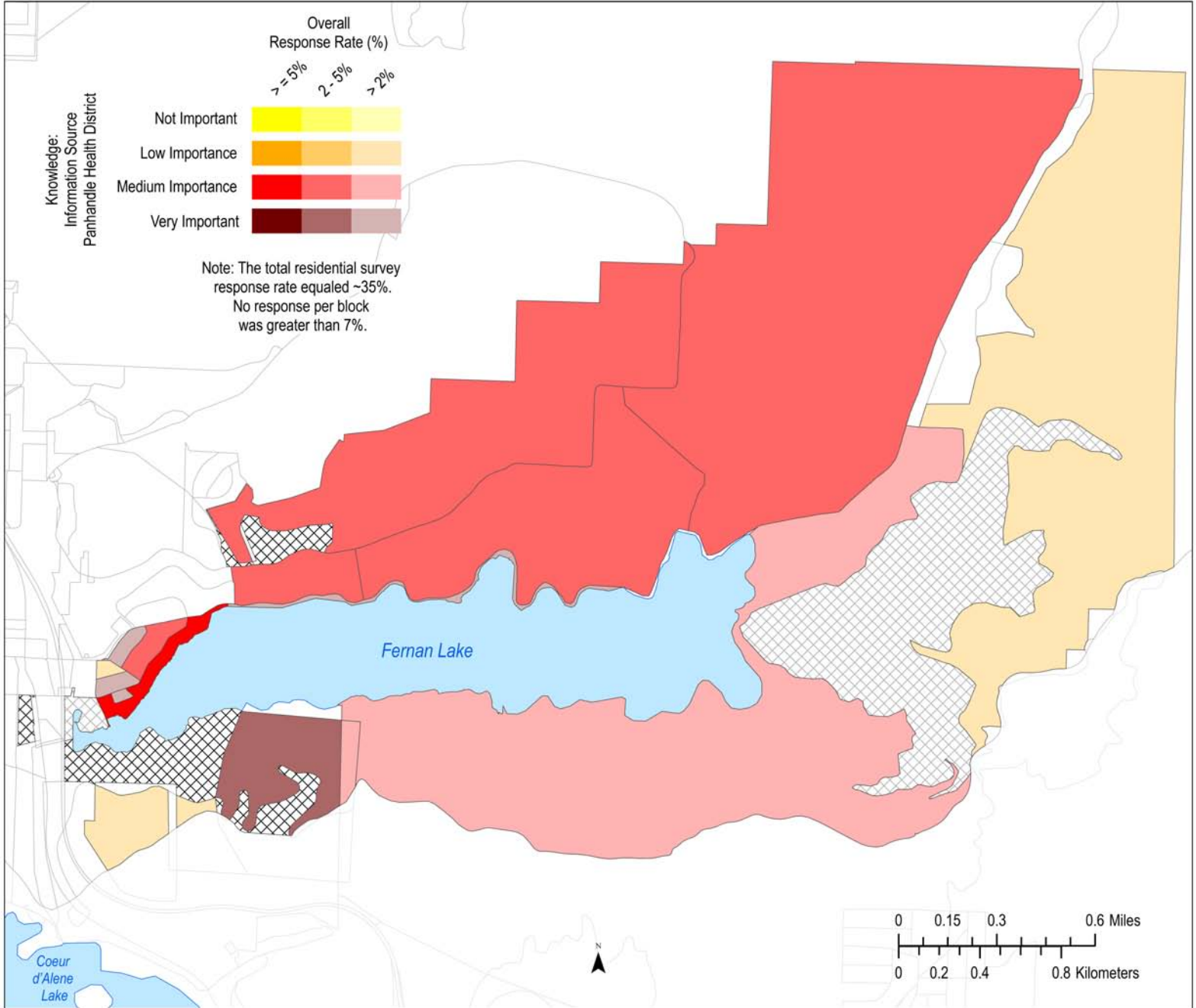


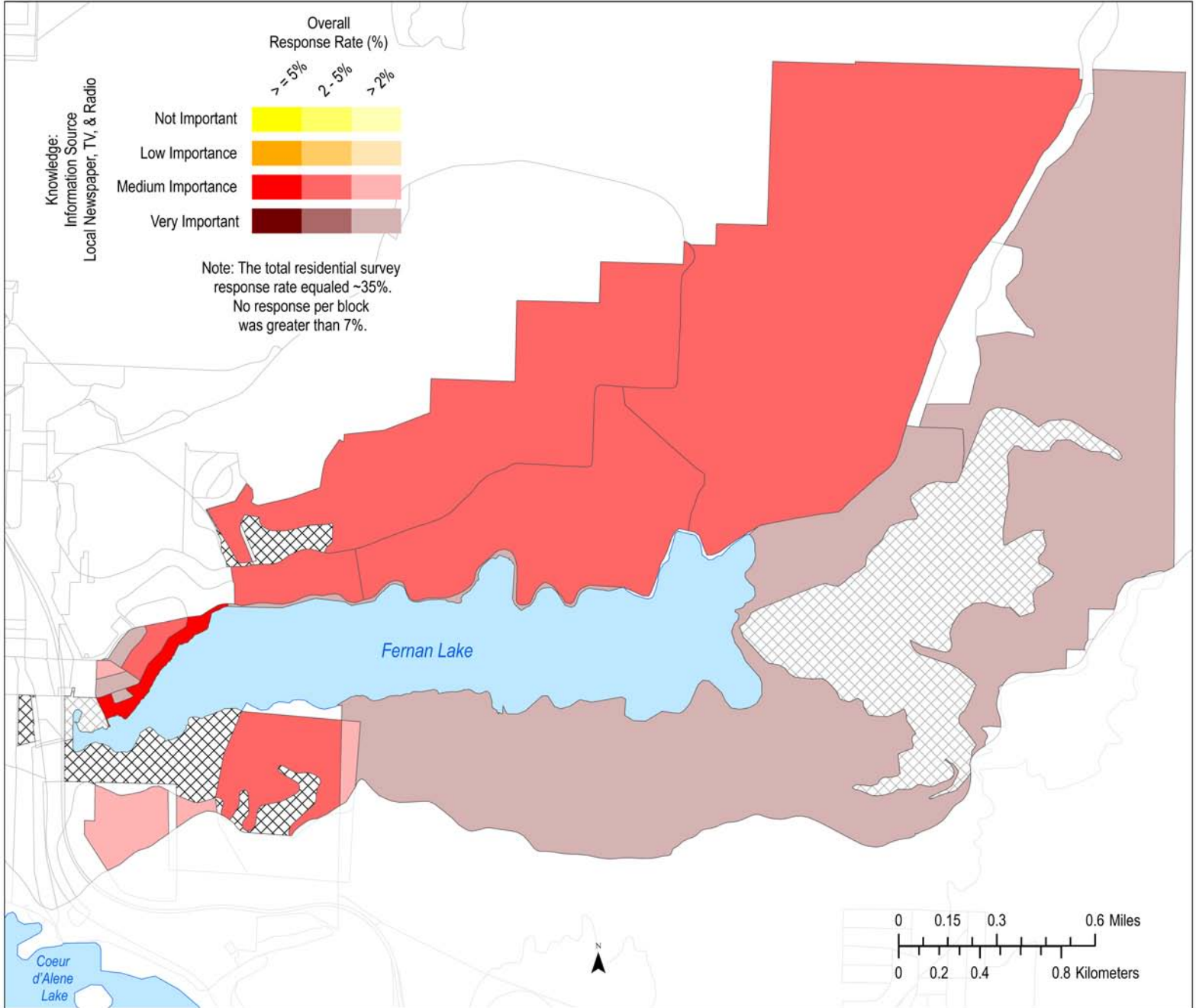


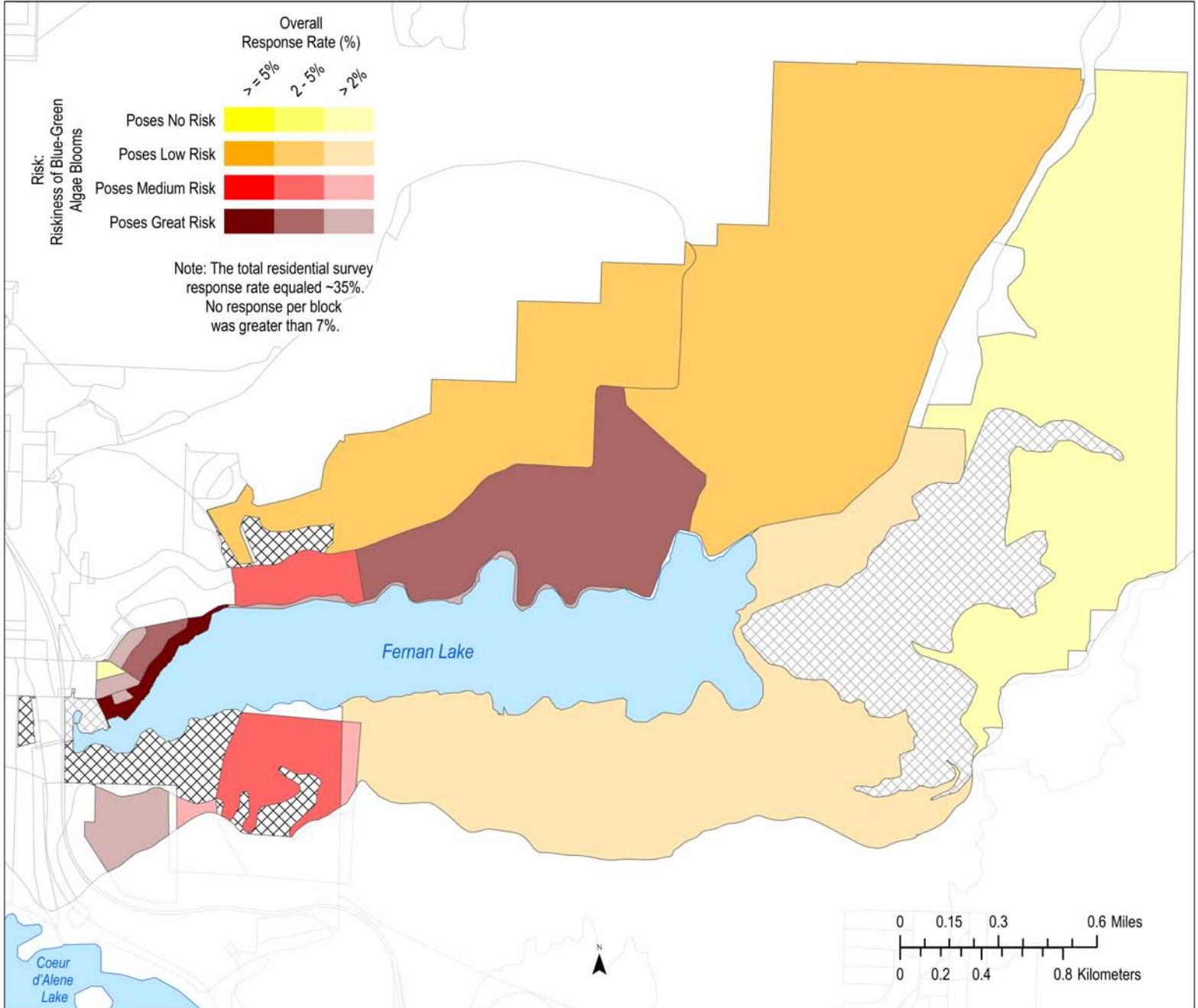


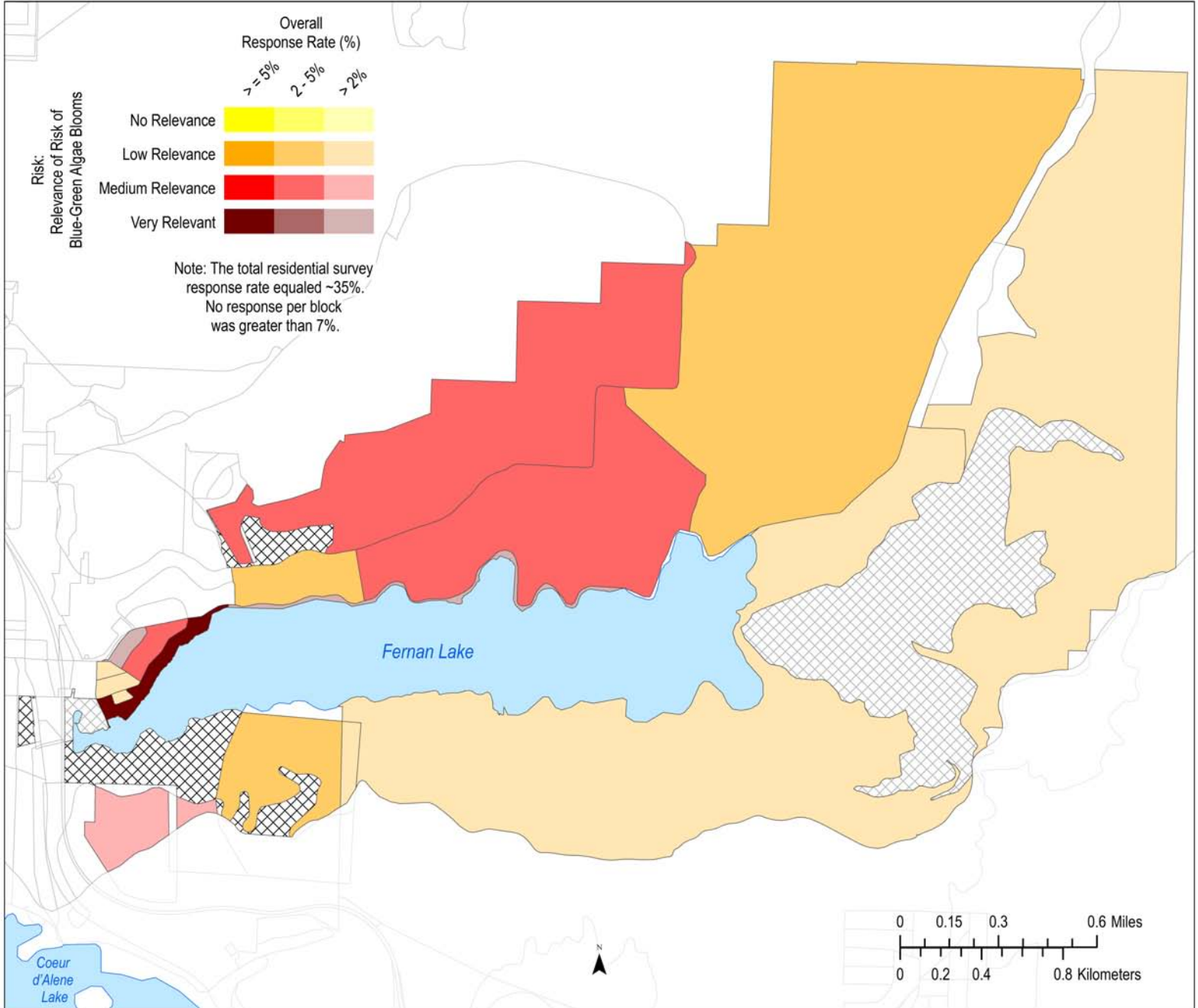


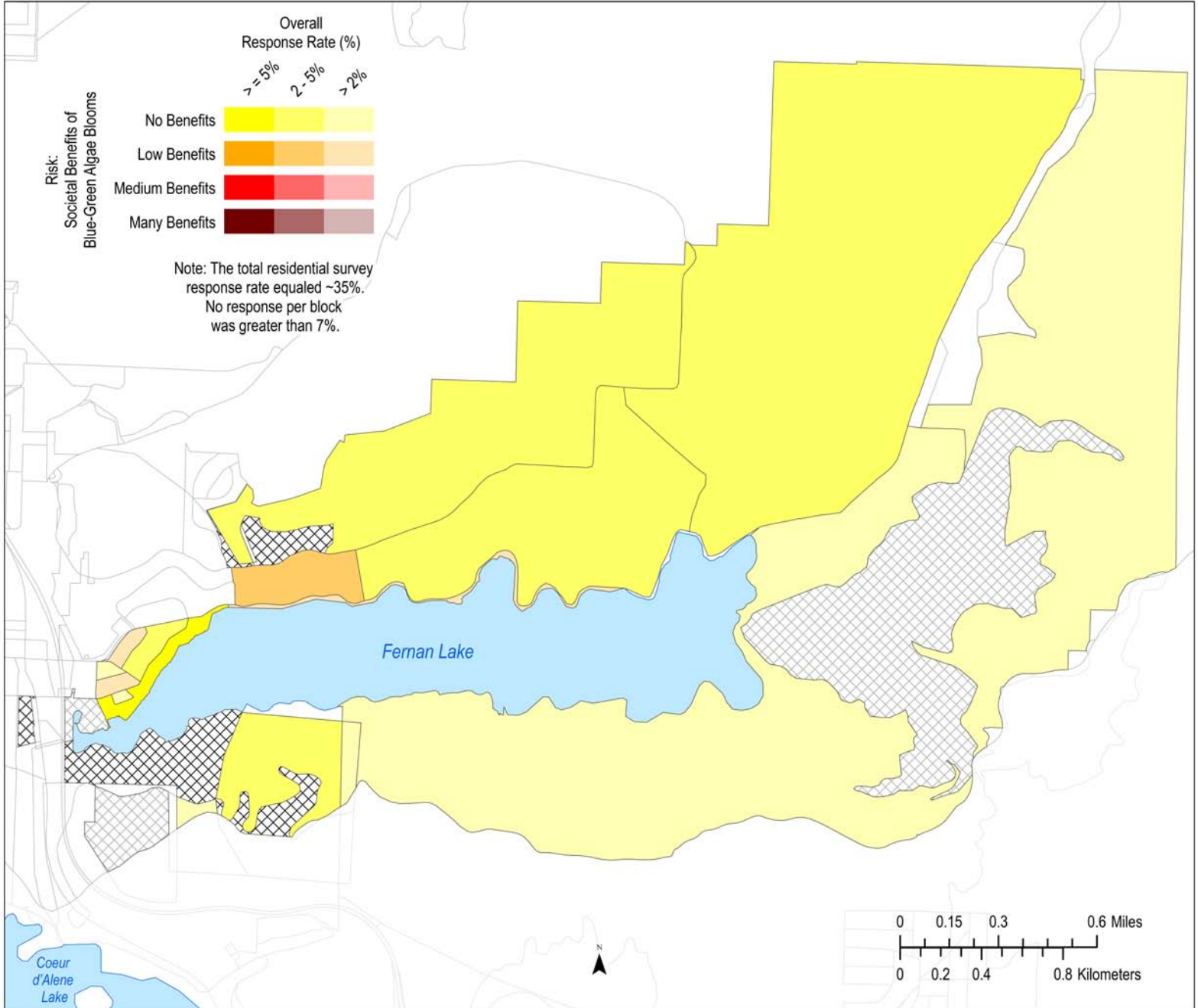


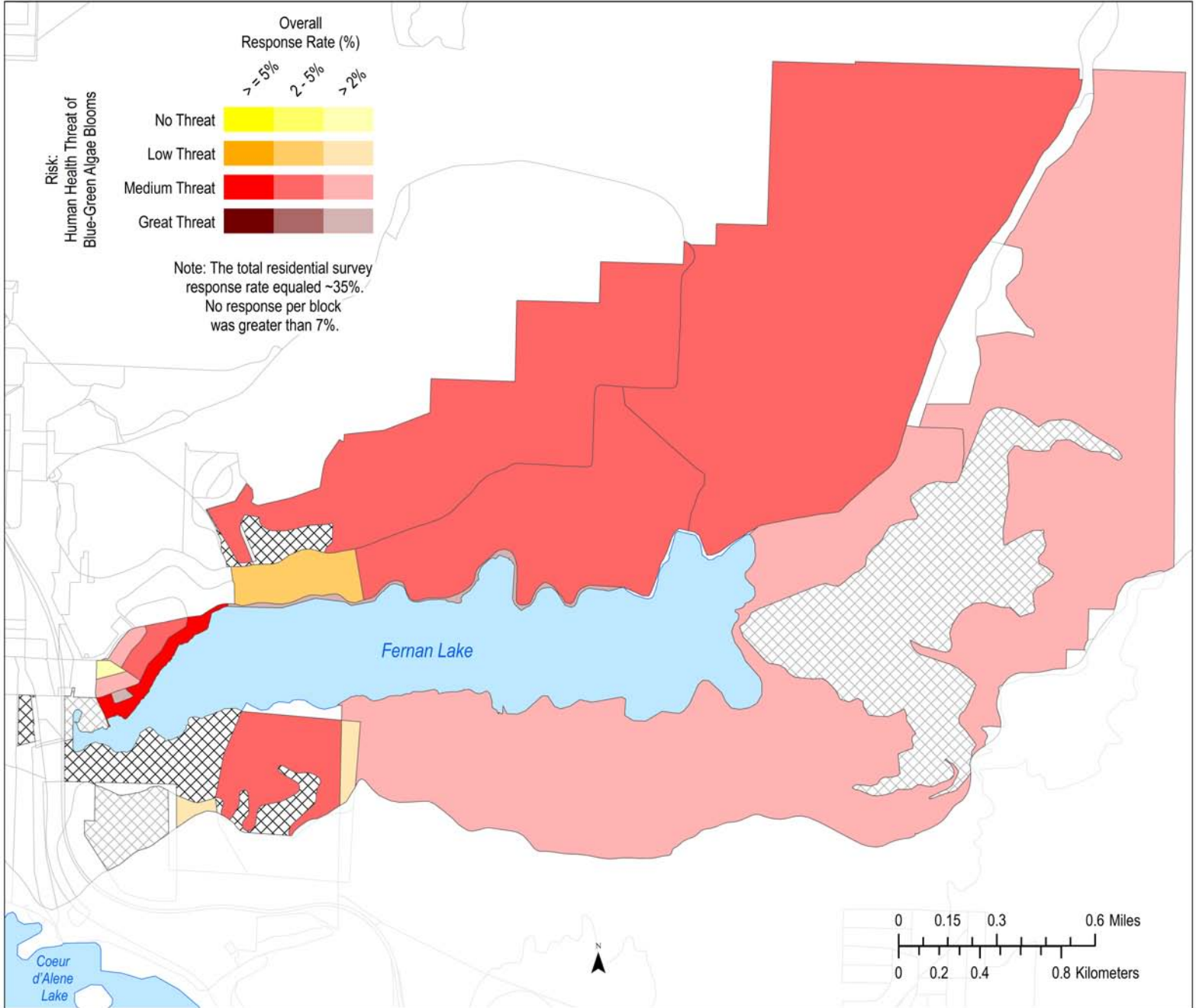


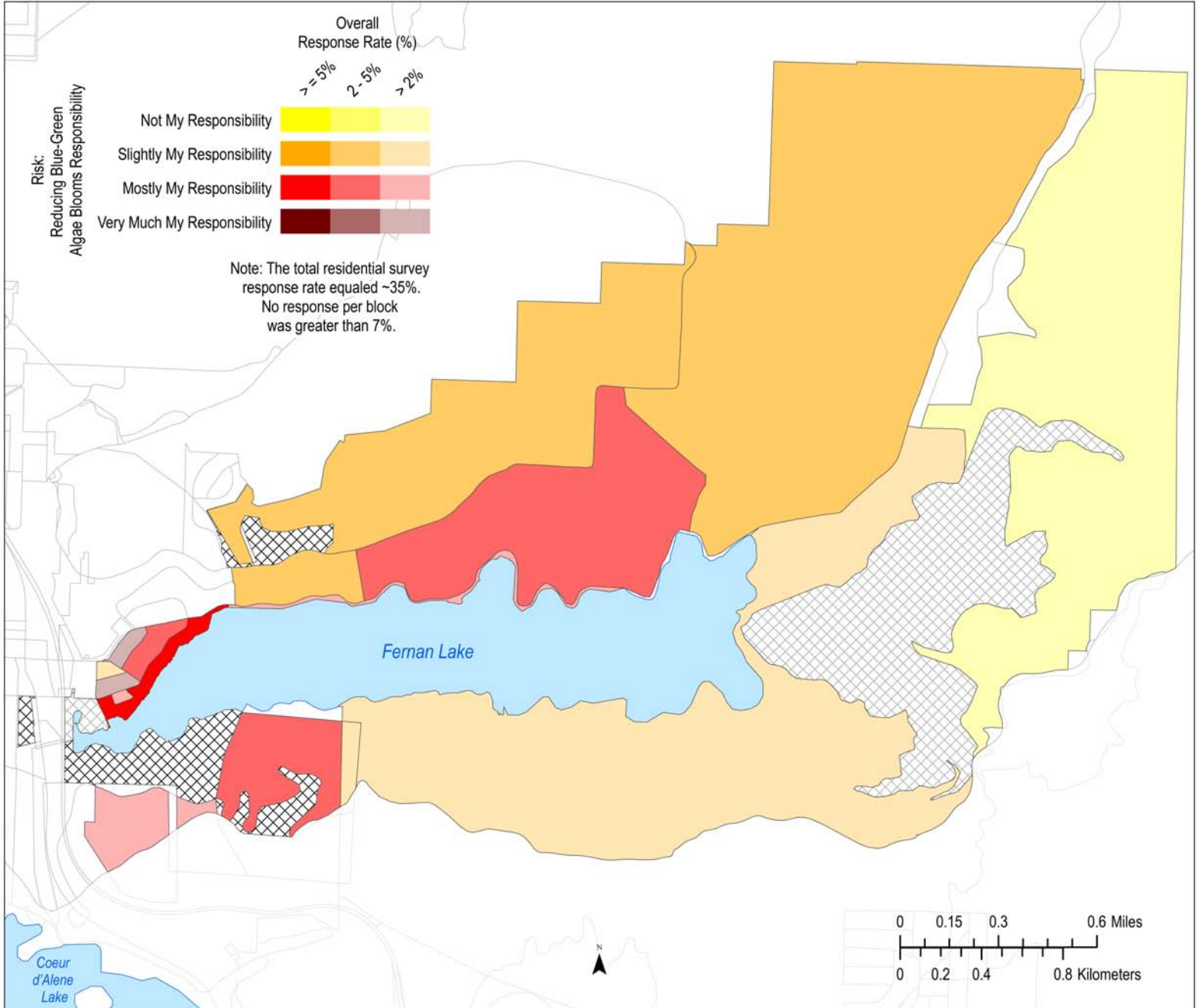












Self Efficacy:
I perceive that in the past five years
algae blooms in Fernan Lake are:

Overall
Response Rate (%)

>=5%
2-5%
>2%

Increased

Slightly Increased

Stayed the Same

Decreased

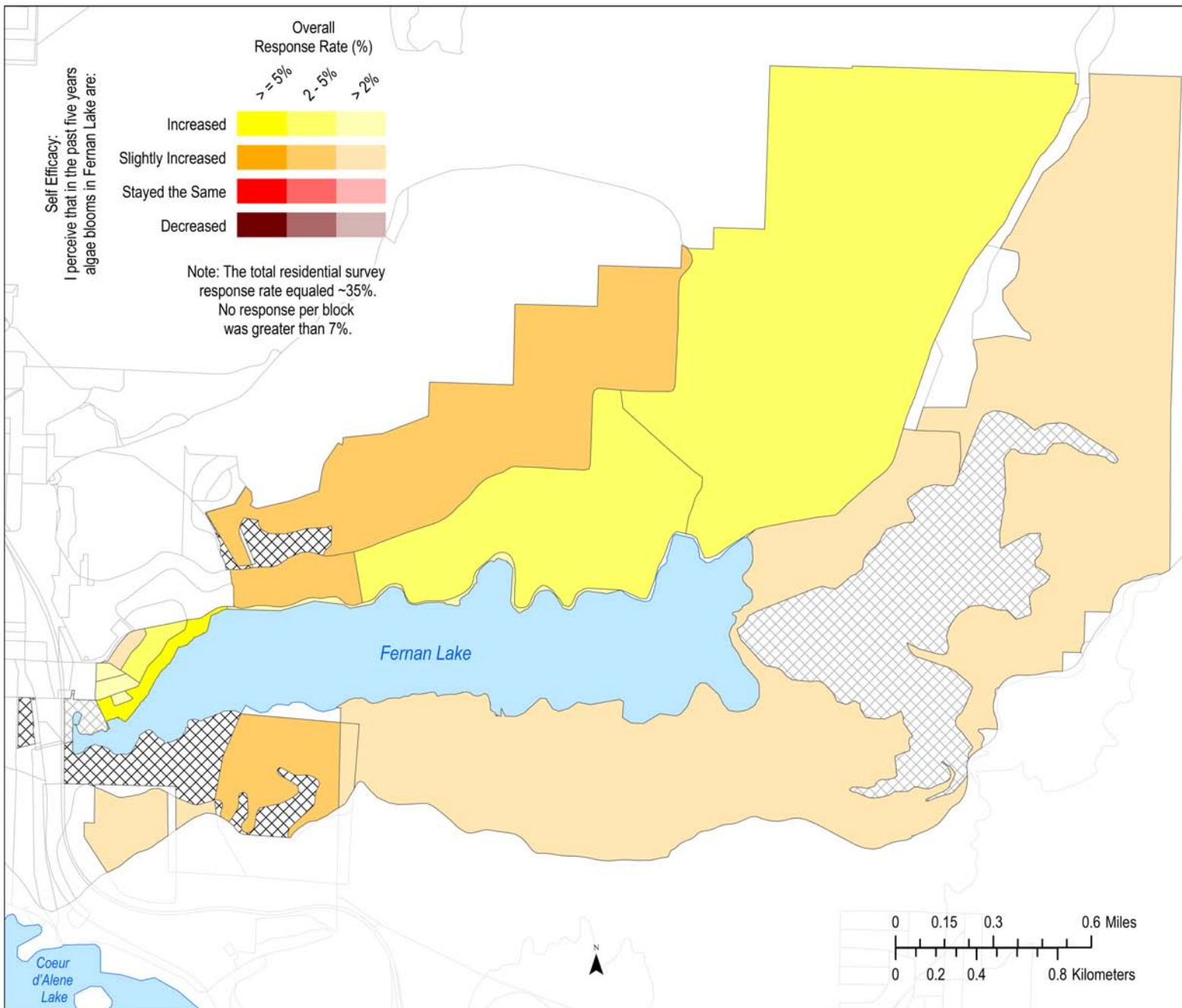
Note: The total residential survey
response rate equaled ~35%.
No response per block
was greater than 7%.

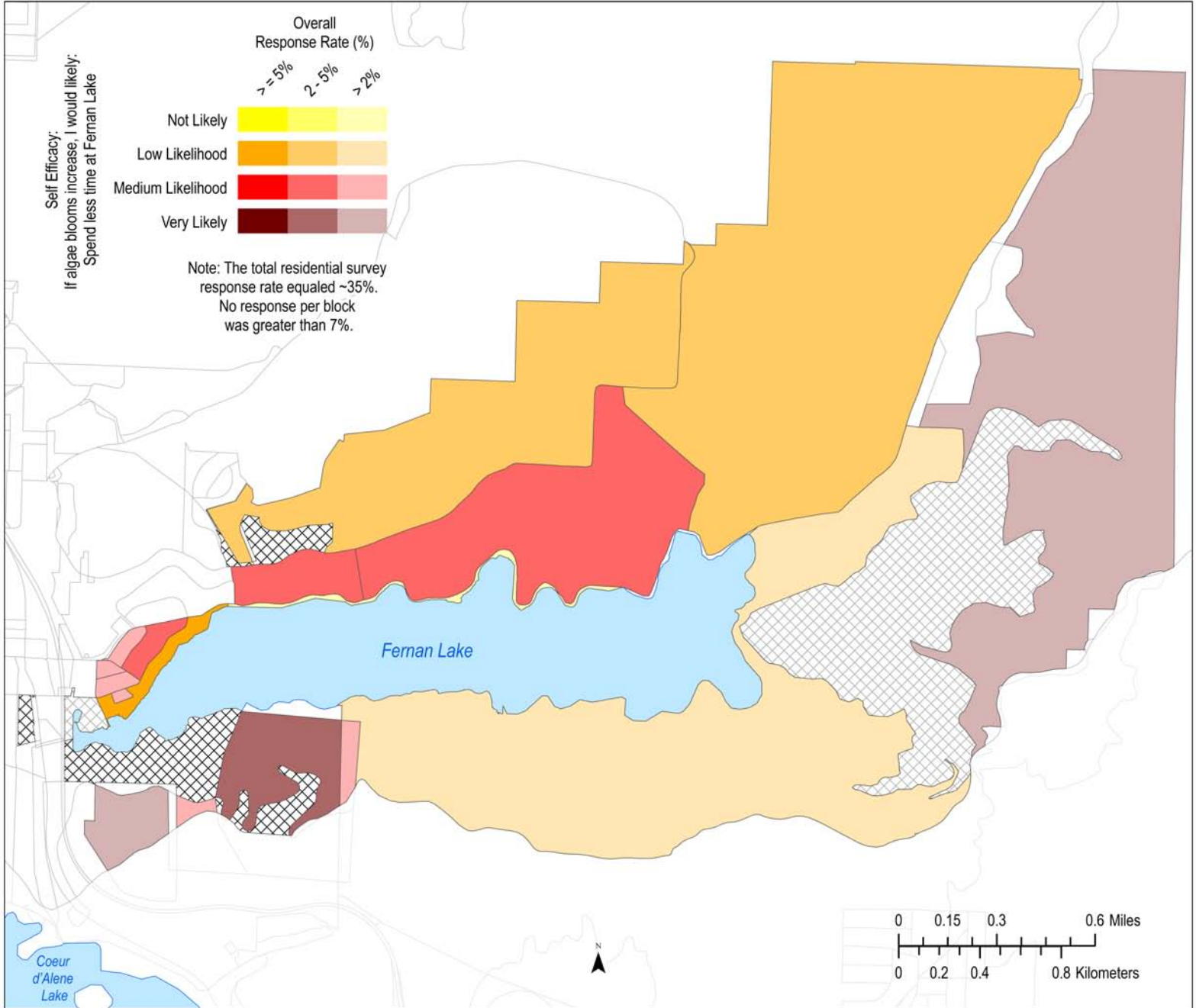
Fernan Lake

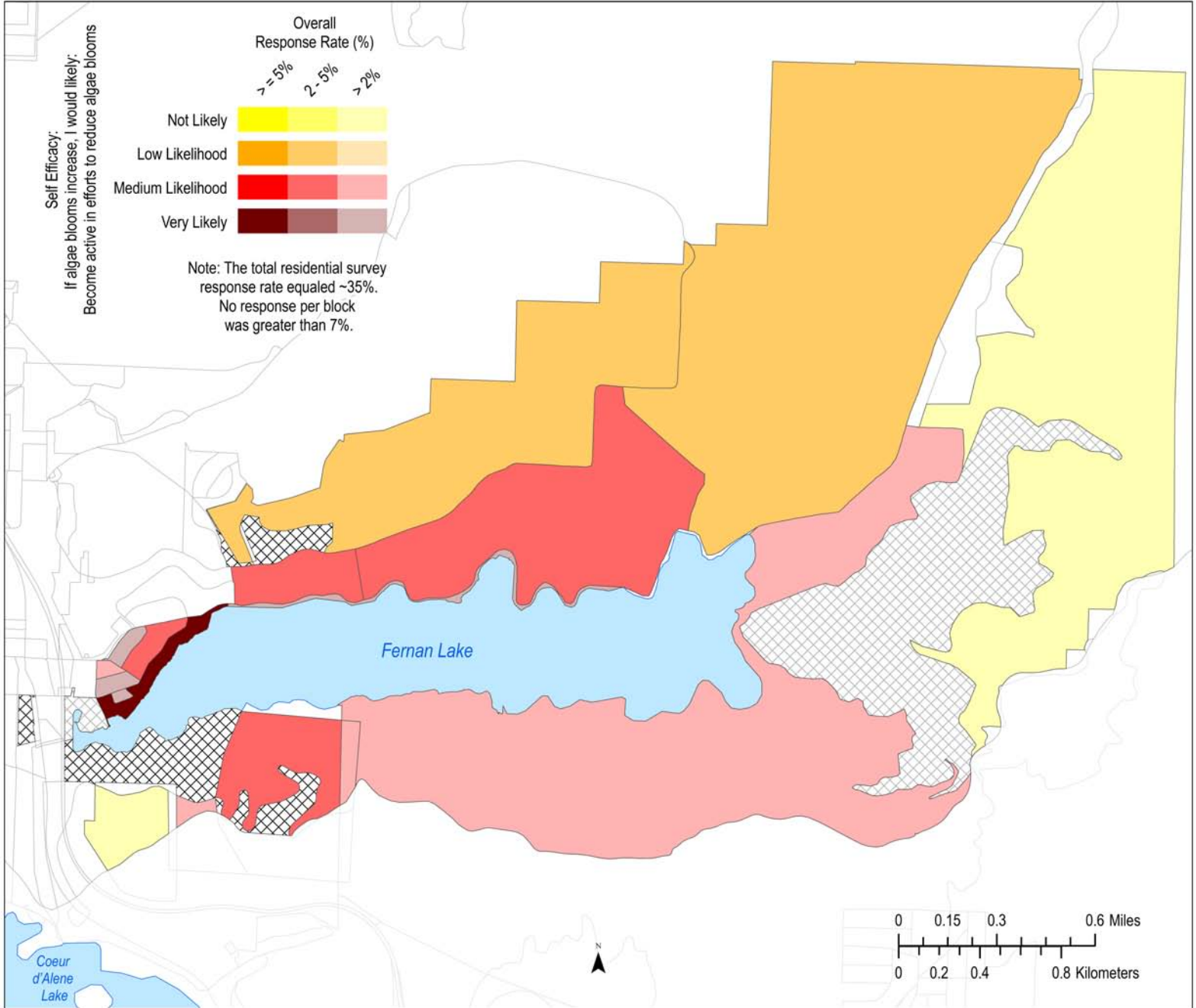
Coeur
d'Alene
Lake

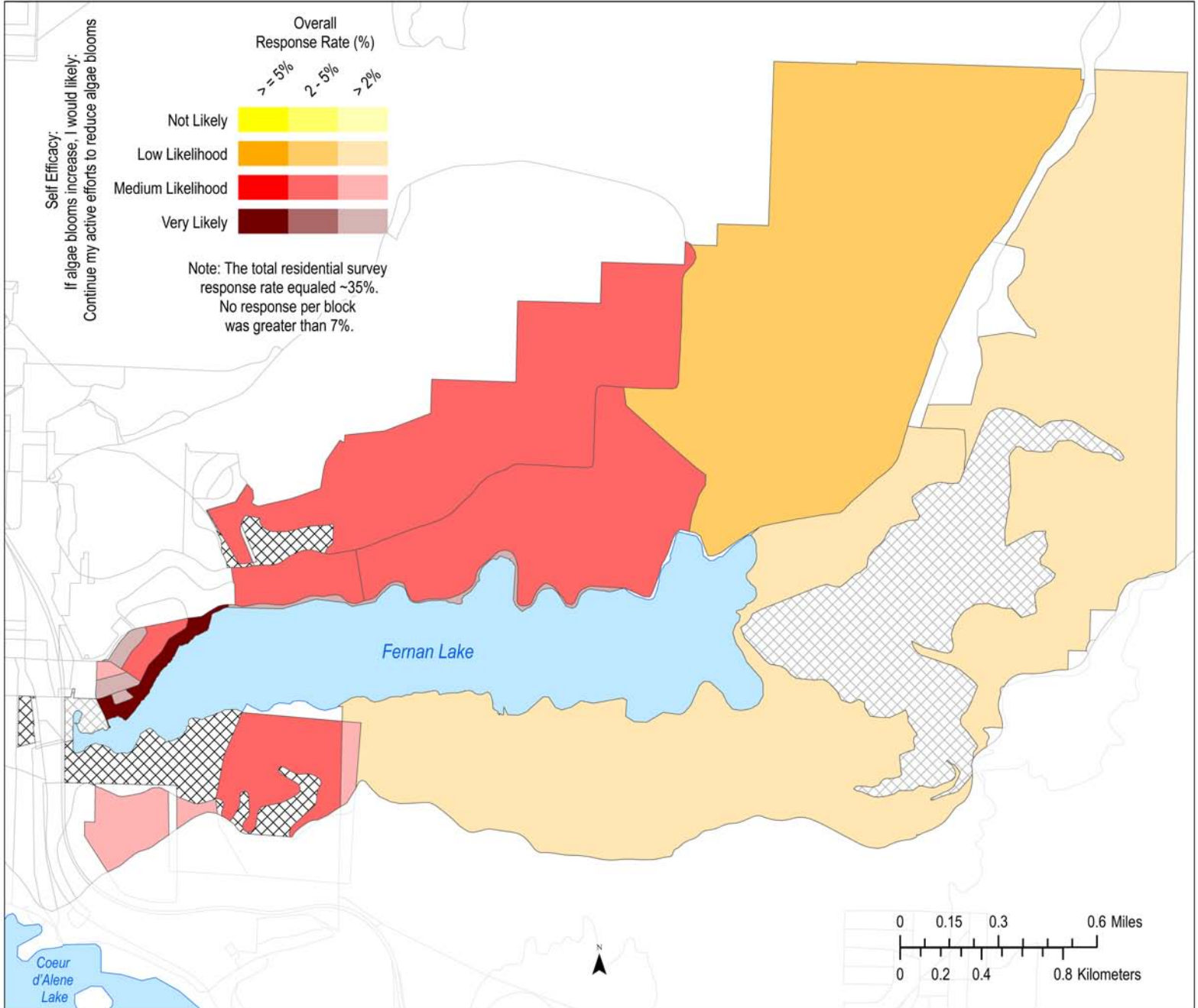


0 0.15 0.3 0.6 Miles
0 0.2 0.4 0.8 Kilometers

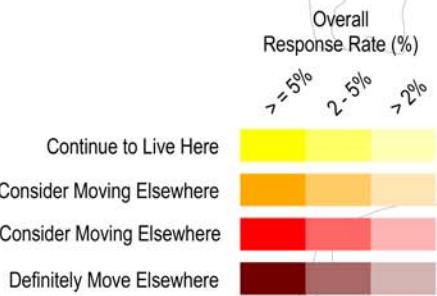




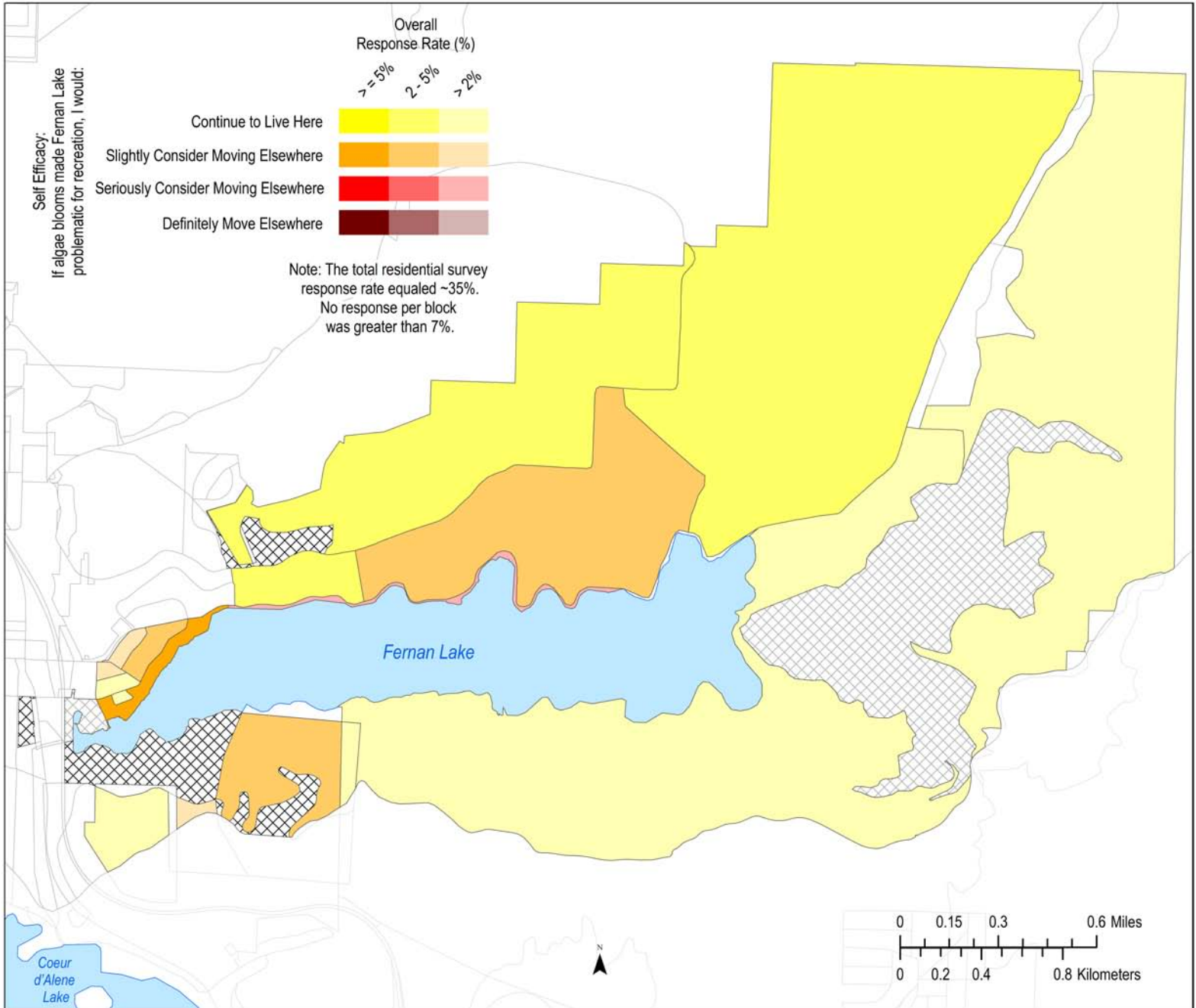


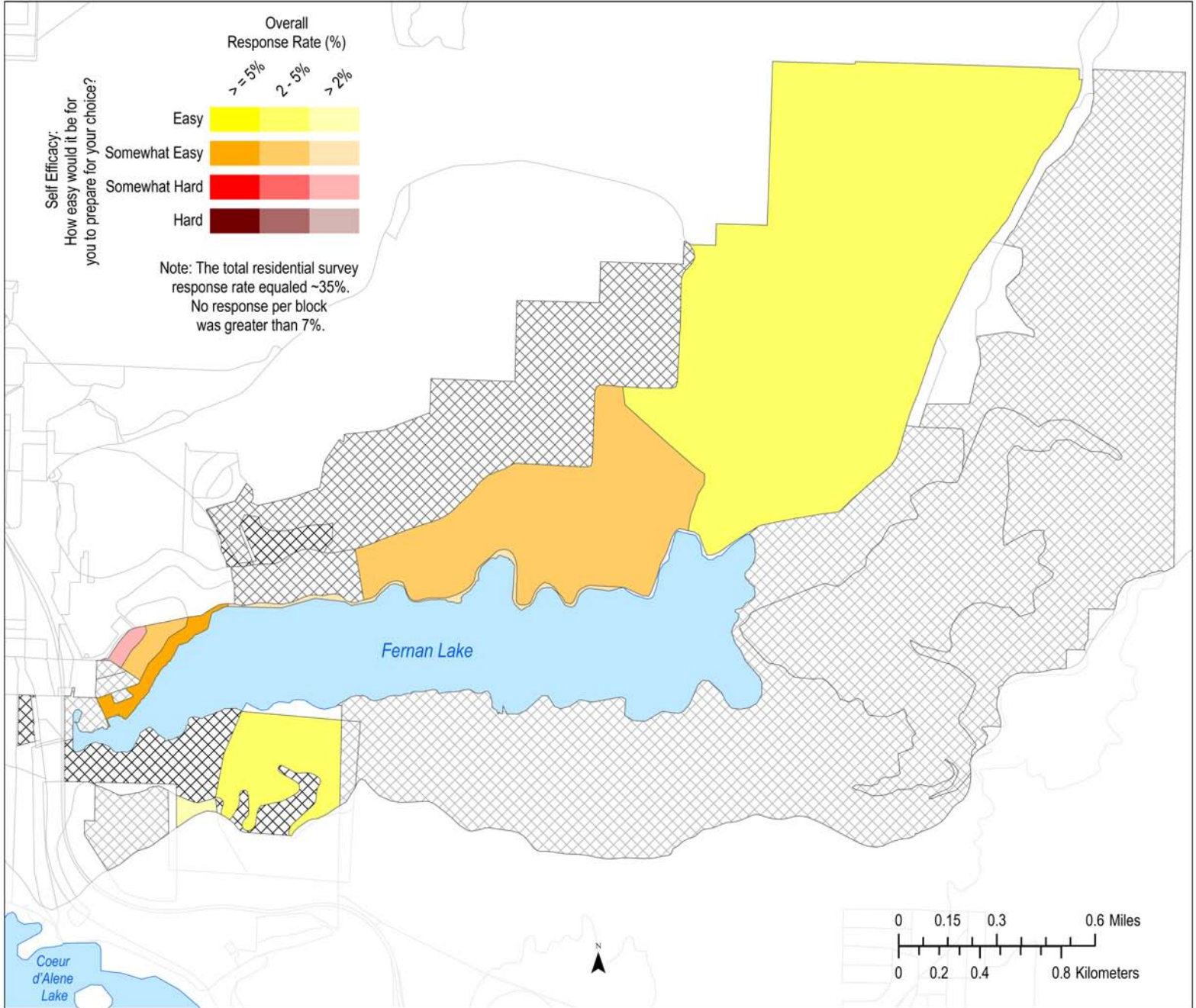


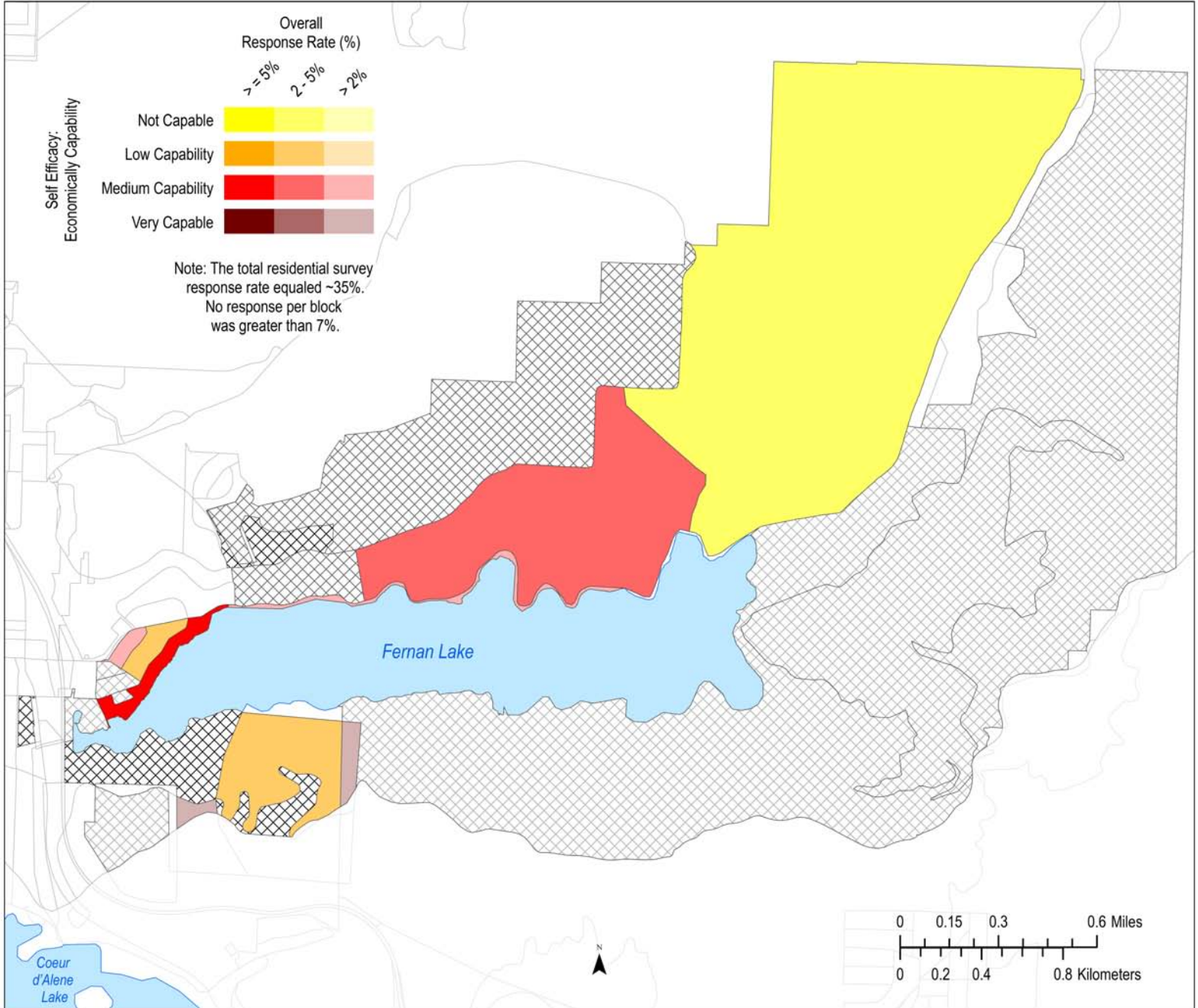
Self Efficacy:
If algae blooms made Fernan Lake
problematic for recreation, I would:

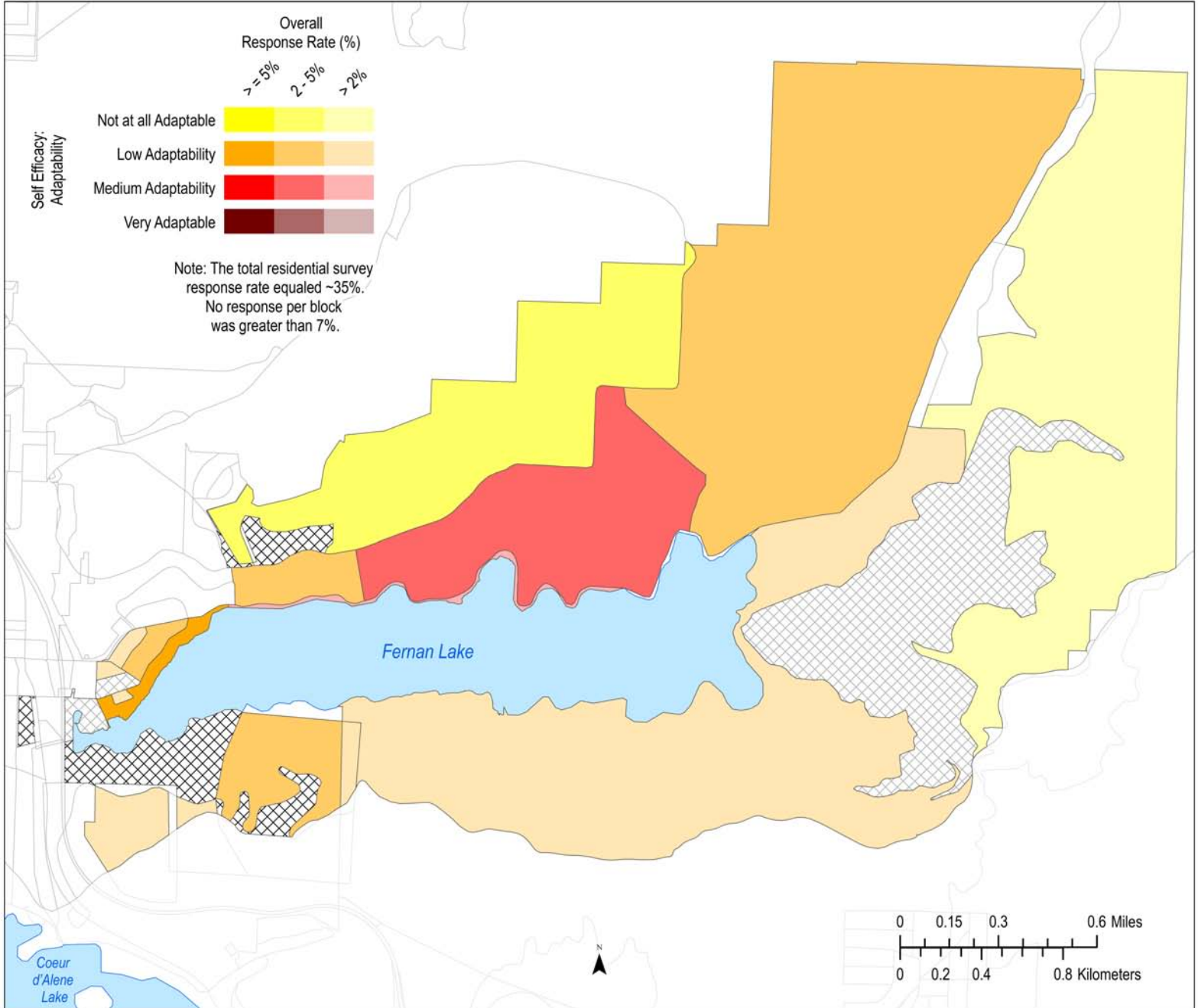


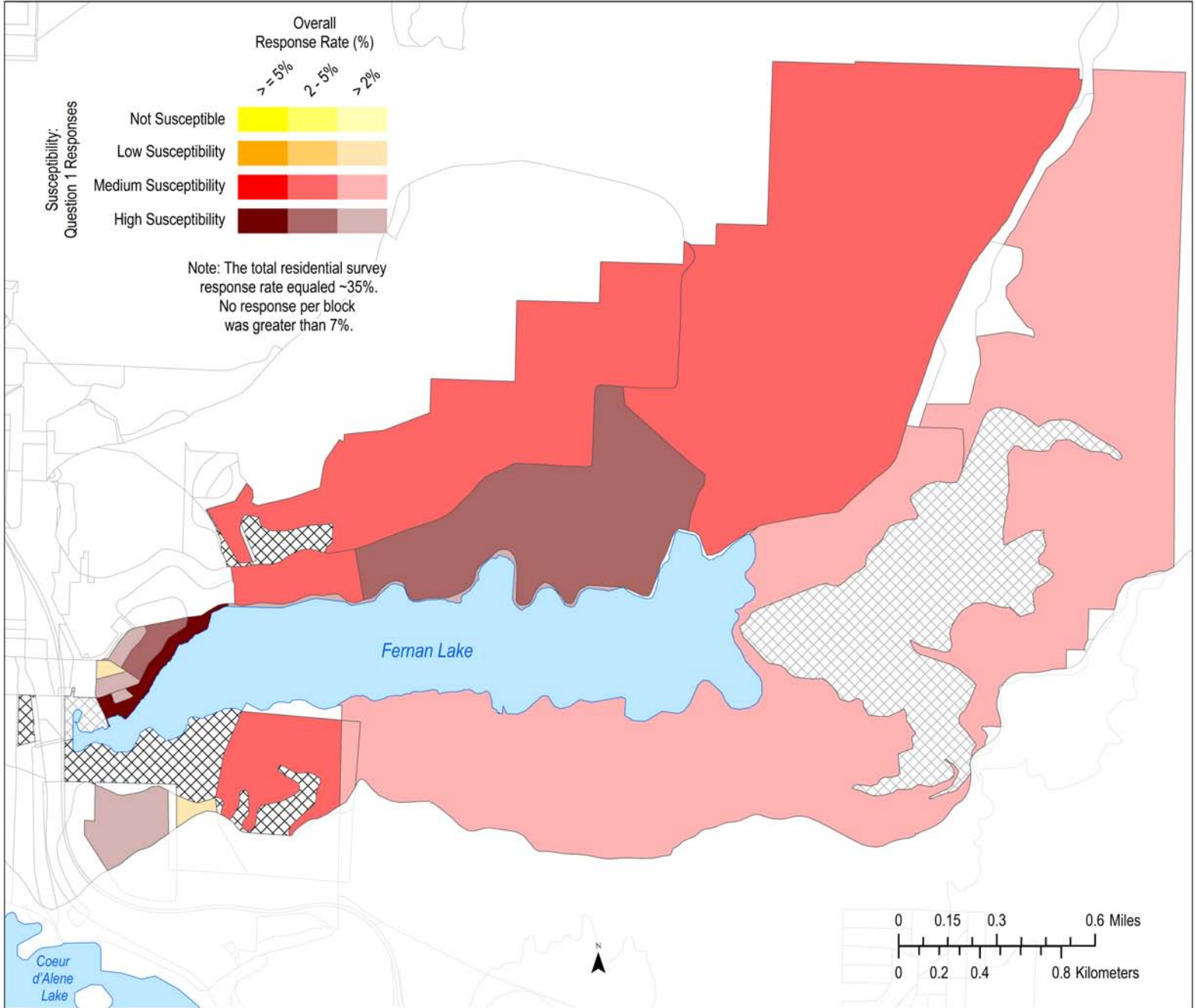
Note: The total residential survey
response rate equaled ~35%.
No response per block
was greater than 7%.

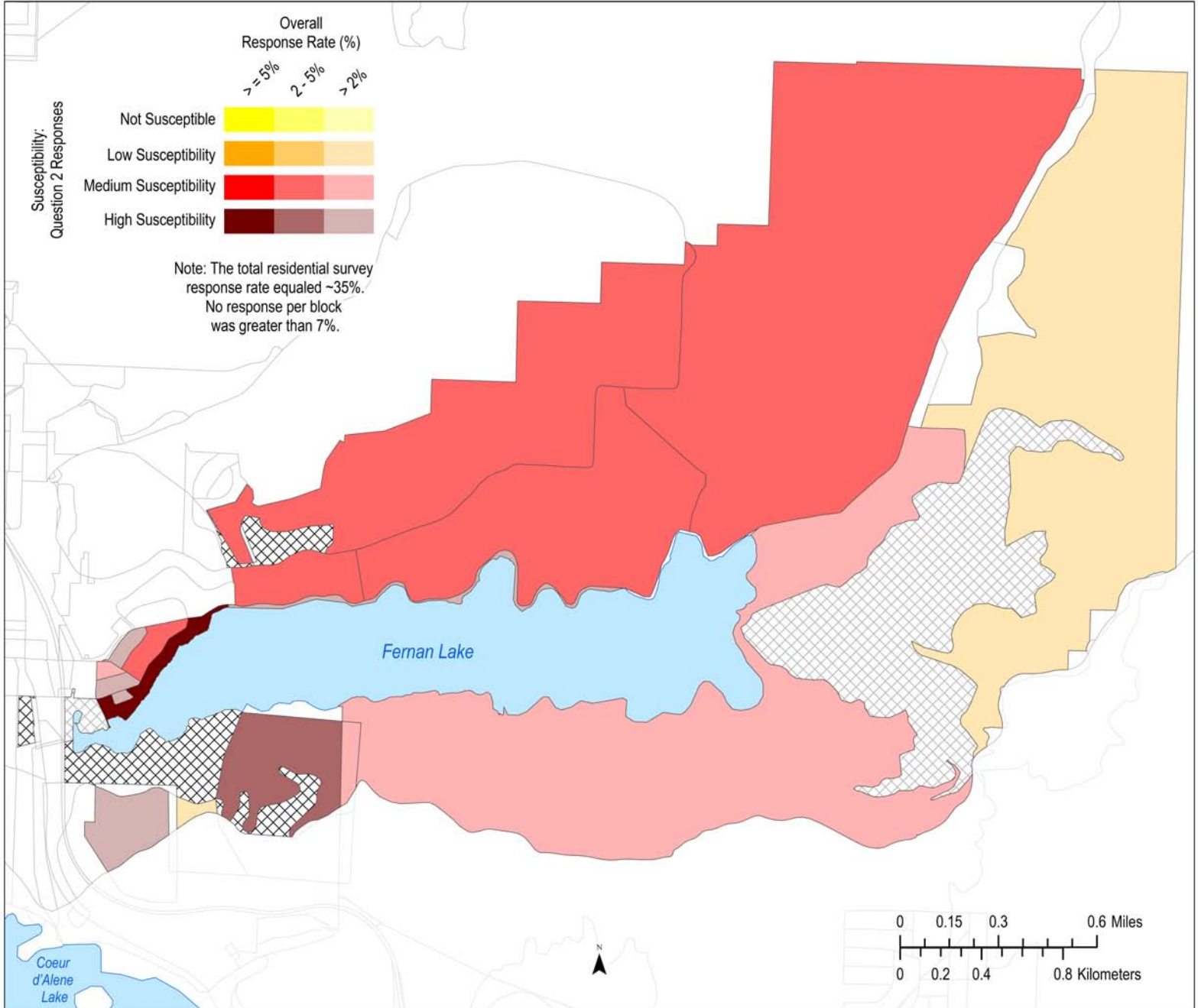


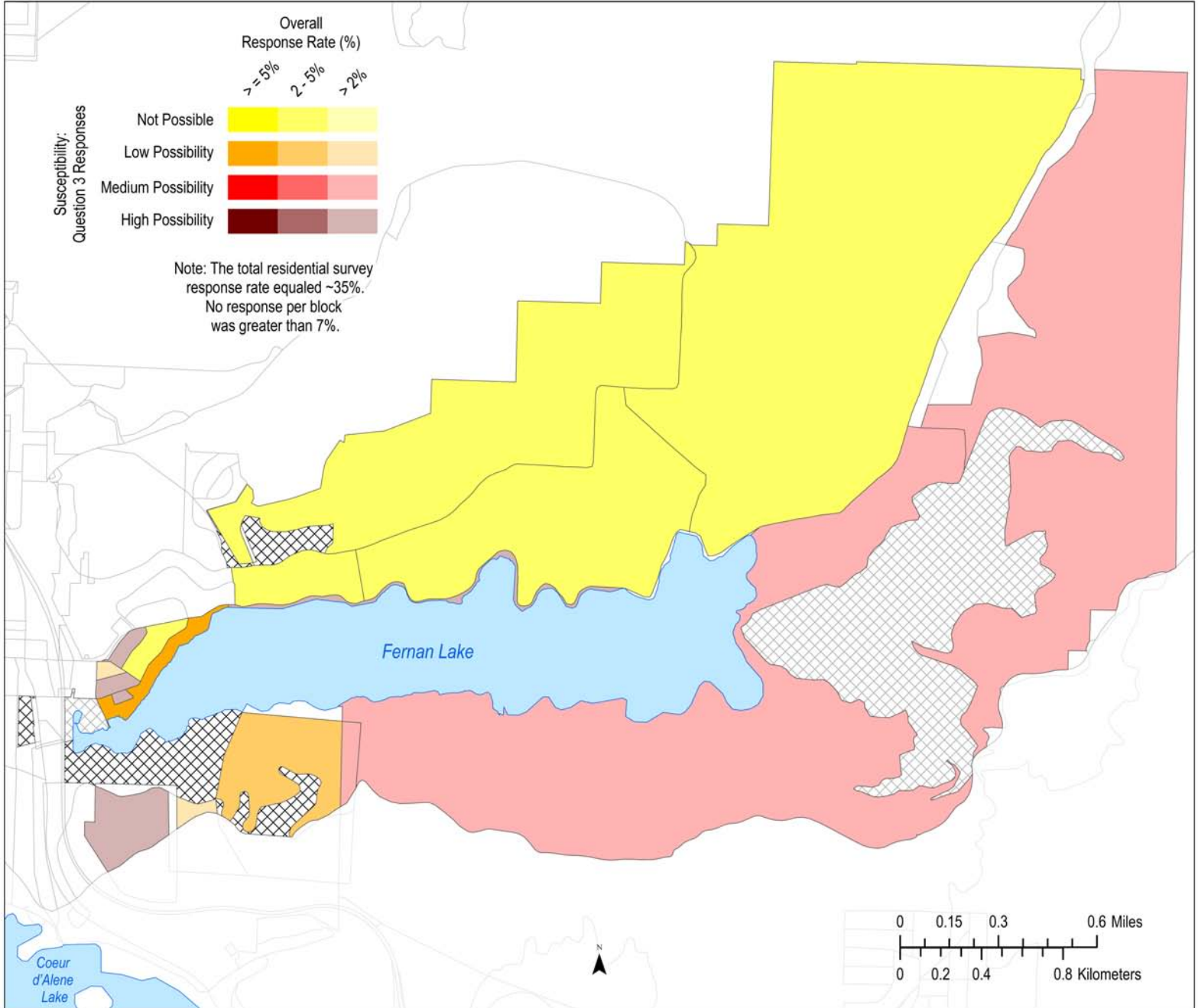


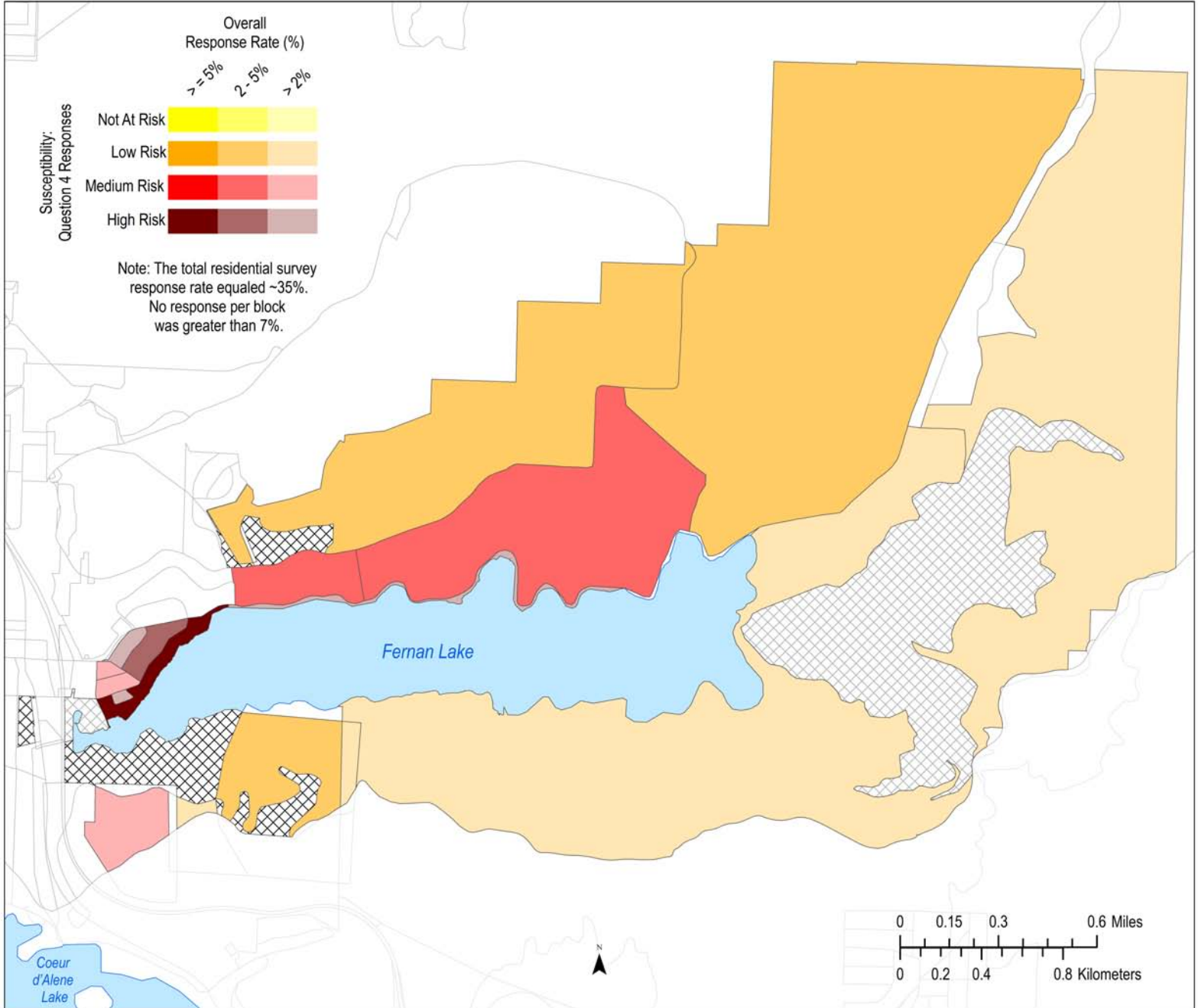


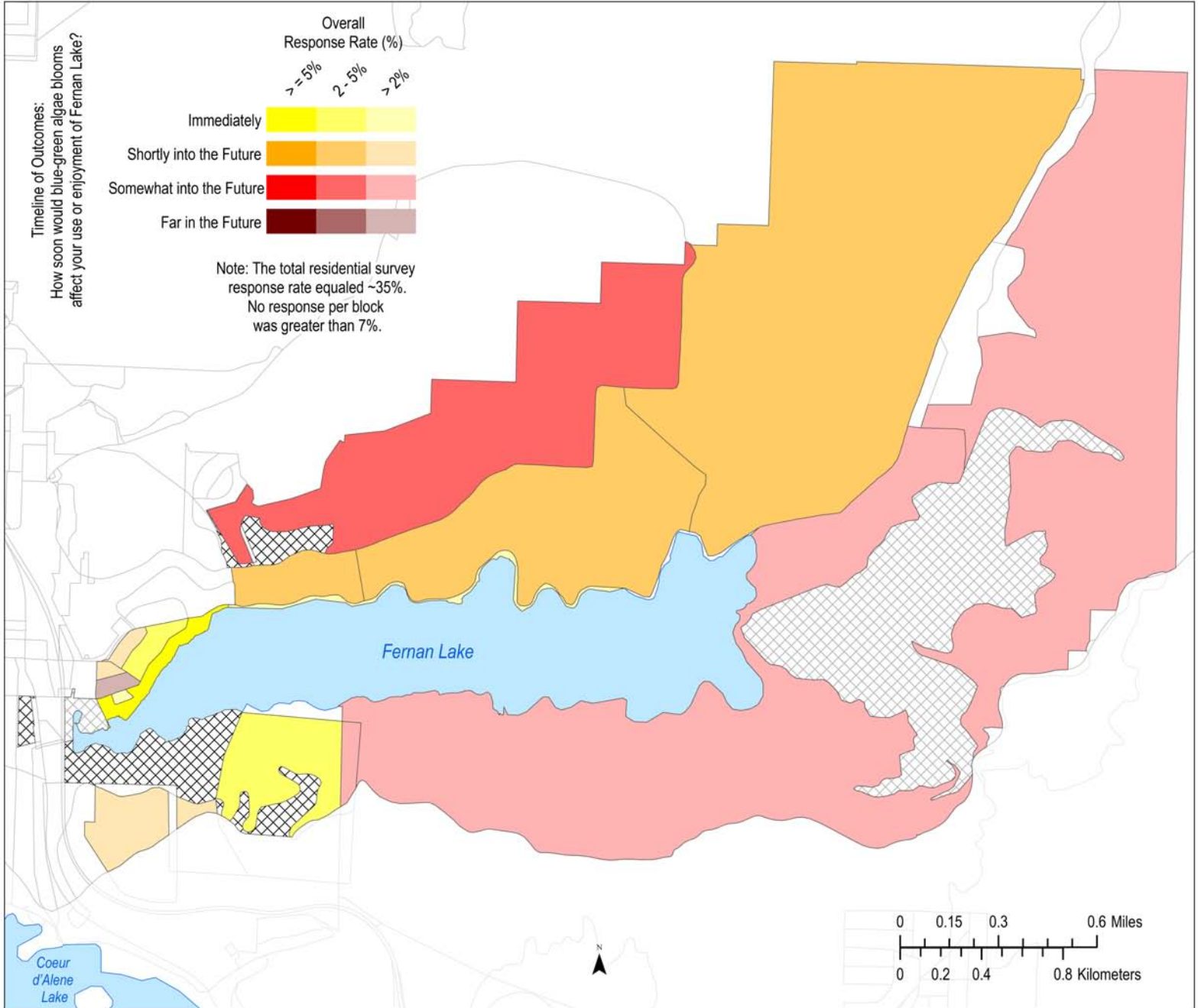


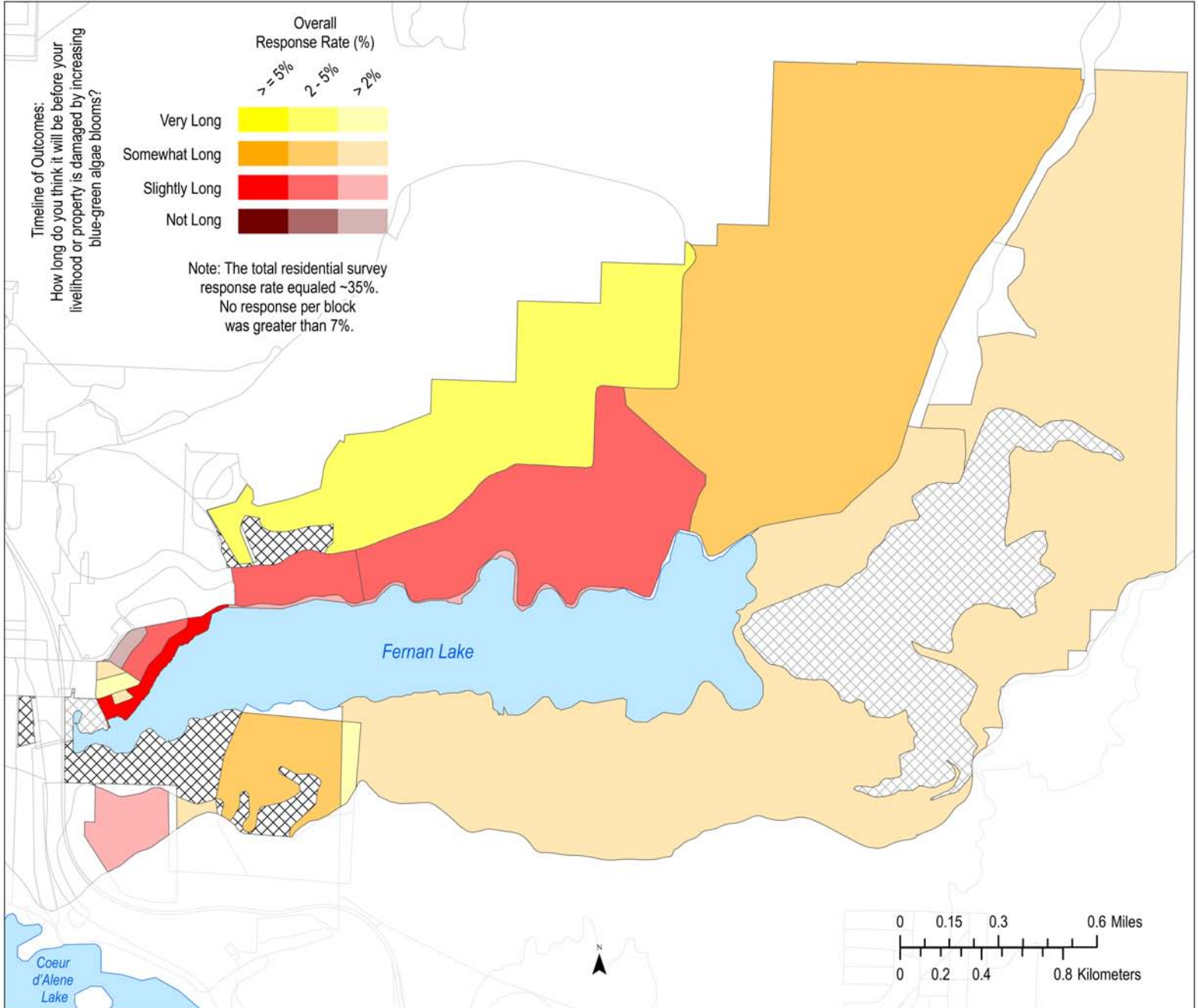












Timeline of Outcomes:
How long are impacts from blue-green
algae blooms likely to last on Fernan
Lake's natural environment?

Overall
Response Rate (%)
≥ 5% 2-5% < 2%



Note: The total residential survey
response rate equaled ~35%.
No response per block
was greater than 7%.

Fernan Lake

Coeur
d'Alene
Lake



0 0.15 0.3 0.6 Miles
0 0.2 0.4 0.8 Kilometers

Timeline of Outcomes:
How often do you think about
preparing for the possibility of an
increase in blue-green alge blooms?



Note: The total residential survey
response rate equaled ~35%.
No response per block
was greater than 7%.

